



ELECTRONIC COPY

LABORATORY GROWN DIAMOND REPORT

March 8, 2024	
IGI Report Number	LG625447610
Description	LABORATORY GROWN DIAMOND
Shape and Cutting Style	SQUARE EMERALD CUT
Measurements	6.30 X 6.23 X 4.22 MM

GRADING RESULTS

Carat Weight	1.51 CARAT
Color Grade	E
Clarity Grade	VS 1

ADDITIONAL GRADING INFORMATION

Polish	EXCELLENT
Symmetry	EXCELLENT
Fluorescence	NONE
Inscription(s)	 LG625447610

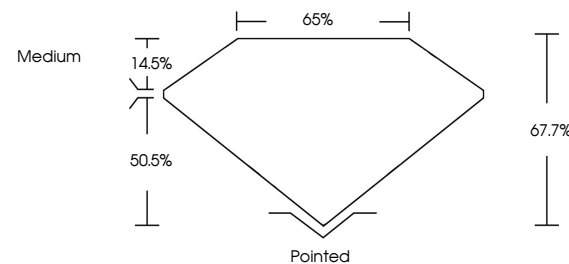
Comments: This Laboratory Grown Diamond was created by Chemical Vapor Deposition (CVD) growth process and may include post-growth treatment.
Type IIa

LABORATORY GROWN DIAMOND REPORT

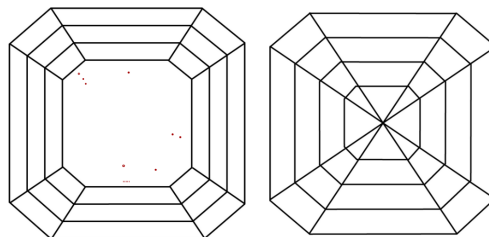
LG625447610

Report verification at igi.org

PROPORTIONS



CLARITY CHARACTERISTICS



KEY TO SYMBOLS

Red symbols indicate internal characteristics.
Green symbols indicate external characteristics.

LABORATORY GROWN
DIAMOND REPORT

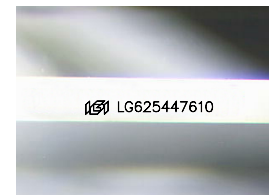
GRADING SCALES

CLARITY

IF	VVS ¹⁻²	VS ¹⁻²	SI ¹⁻²	I ¹⁻³
Internally Flawless	Very Very Slightly Included	Very Slightly Included	Slightly Included	Included

COLOR

D E F G H I J Faint Very Light Light



Sample Image Used

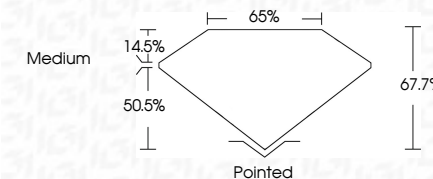


© IGI 2020, International Gemological Institute

FD - 10 20



March 8, 2024	
IGI Report Number	LG625447610
Description	LABORATORY GROWN DIAMOND
Shape and Cutting Style	SQUARE EMERALD CUT
Measurements	6.30 X 6.23 X 4.22 MM
GRADING RESULTS	
Carat Weight	1.51 CARAT
Color Grade	E
Clarity Grade	VS 1



ADDITIONAL GRADING INFORMATION

Polish	EXCELLENT
Symmetry	EXCELLENT
Fluorescence	NONE
Inscription(s)	(16) LG625447610

Comments: This Laboratory Grown Diamond was created by Chemical Vapor Deposition (CVD) growth process and may include post-growth treatment.
Type IIa

March 8, 2024	Report No. LG25647610	1.61 CARAT
SQUARE EMERALD CUT		
3.50 X 4.25 X 4.22 MM		
Carat Weight		
Color Grade	E	
Clarity Grade	Vs1	
Depth	67.7%	
Table	65%	
Girdle	Medium	
Culet	Pointed	
Polish	EXCELLENT	
Symmetry	EXCELLENT	
Fluorescence	NONE	
Inscription(s)	691 LG25647610	

Comments:

The Laboratory Crown Diamond was created by Chemical Vapor Deposition (CVD) processes and may include post-growth treatment.

type Iia

Comments:
This Laboratory Grown Diamond was created by Chemical Vapor Deposition (CVD) growth process and may include post-growth treatment.