



**INTERNATIONAL  
GEMOLOGICAL  
INSTITUTE**

**ELECTRONIC COPY**

**LABORATORY GROWN  
DIAMOND REPORT**

**LG625411213**

**IGI LABORATORY GROWN  
DIAMOND ID REPORT**

March 22, 2024  
IGI Report Number **LG625411213**  
**CUT CORNERED RECTANGULAR  
MODIFIED BRILLIANT**  
**6.18 X 4.12 X 2.85 MM**  
Carat Weight 0.62 CARAT  
Color Grade E  
Clarity Grade IF.  
Polish EXCELLENT  
Symmetry EXCELLENT  
Fluorescence NONE  
Inscription(s) LG625411213

Comments: This Laboratory Grown Diamond was created by Chemical Vapor Deposition (CVD) growth process and may include post-growth treatment. Type Ila

**LABORATORY GROWN DIAMOND REPORT**

**IGI LABORATORY GROWN DIAMOND IDENTIFICATION REPORT**

March 22, 2024  
IGI Report Number LG625411213  
Description LABORATORY GROWN DIAMOND  
Shape and Cutting Style CUT CORNERED RECTANGULAR MODIFIED BRILLIANT  
Measurements 6.18 X 4.12 X 2.85 MM

**GRADING RESULTS**

Carat Weight 0.62 CARAT  
Color Grade E  
Clarity Grade INTERNALLY FLAWLESS

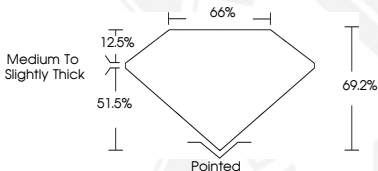
**ADDITIONAL GRADING INFORMATION**

Polish EXCELLENT  
Symmetry EXCELLENT  
Fluorescence NONE  
Inscription(s) LG625411213

Comments: This Laboratory Grown Diamond was created by Chemical Vapor Deposition (CVD) growth process and may include post-growth treatment. Type Ila



Sample Image Used



**IGI LABORATORY GROWN  
DIAMOND ID REPORT**

March 22, 2024  
IGI Report Number **LG625411213**  
**CUT CORNERED RECTANGULAR  
MODIFIED BRILLIANT**  
**6.18 X 4.12 X 2.85 MM**  
Carat Weight 0.62 CARAT  
Color Grade E  
Clarity Grade IF.  
Polish EXCELLENT  
Symmetry EXCELLENT  
Fluorescence NONE  
Inscription(s) LG625411213

Comments: This Laboratory Grown Diamond was created by Chemical Vapor Deposition (CVD) growth process and may include post-growth treatment. Type Ila



THIS DOCUMENT WAS PRODUCED WITH THE FOLLOWING SECURITY MEASURES: SPECIAL DOCUMENT PAPER, INK SCREENS, WATERMARK, BACKGROUND DESIGN, HOLOGRAM AND OTHER SECURITY FEATURES NOT LISTED AND DO EXCEED DOCUMENT SECURITY INDUSTRY GUIDELINES.

For terms & conditions and to verify this report, please visit [www.igi.org](http://www.igi.org)