

**ELECTRONIC COPY**

## LABORATORY GROWN DIAMOND REPORT

March 6, 2024	
IGI Report Number	LG624422579
Description	LABORATORY GROWN DIAMOND
Shape and Cutting Style	ROUND BRILLIANT
Measurements	7.24 - 7.30 X 4.51 MM

## GRADING RESULTS

Carat Weight	1.50 CARAT
Color Grade	F
Clarity Grade	VVS 2
Cut Grade	EXCELLENT

### ADDITIONAL GRADING INFORMATION

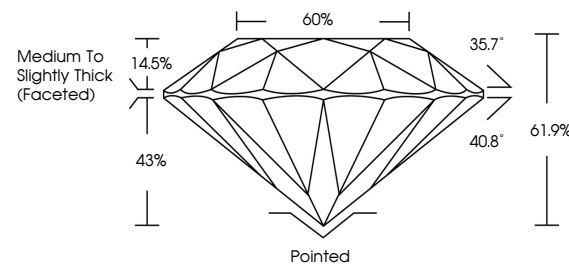
Polish	EXCELLENT
Symmetry	EXCELLENT
Fluorescence	NONE
Inscription(s)	15 LG624422579

Comments: As Grown - No indication of post-growth treatment.  
This Laboratory Grown Diamond was created by High Pressure High Temperature (HPHT) growth process.  
Type II

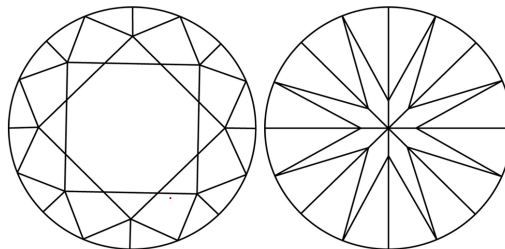
## LABORATORY GROWN DIAMOND REPORT

LG624422579  
Report verification at [igi.org](https://igi.org)

## PROPORTIONS



## CLARITY CHARACTERISTICS



### KEY TO SYMBOLS

Red symbols indicate internal characteristics.  
Green symbols indicate external characteristics.

LABORATORY GROWN  
DIAMOND REPORT

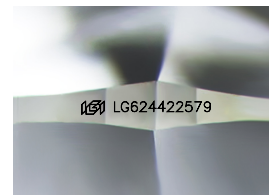
## GRADING SCALES

## CLARITY

IF	VVS <sup>1-2</sup>	VS <sup>1-2</sup>	SI <sup>1-2</sup>	I <sup>1-3</sup>
Internally Flawless	Very Very Slightly Included	Very Slightly Included	Slightly Included	Included

**COLOR**

D E F G H I J Faint Very Light Light



Sample Image Used



© IGI 2020, International Gemological Institute

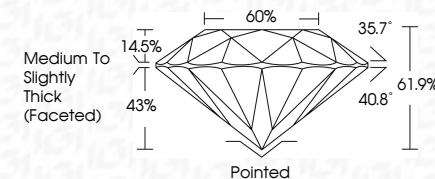
FD - 10 20

## LABORATORY GROWN DIAMOND REPORT

March 6, 2024	
IGI Report Number	LG624422579
Description	LABORATORY GROWN DIAMOND
Shape and Cutting Style	ROUND BRILLIANT
Measurements	7.24 - 7.30 X 4.51 MM

## GRADING RESULTS

Carat Weight	1.50 CARAT
Color Grade	F
Clarity Grade	VVS 2
Cut Grade	EXCELLENT



### ADDITIONAL GRADING INFORMATION

Polish	EXCELLENT
Symmetry	EXCELLENT
Fluorescence	NONE
Inscription(s)	<del>(G)</del> LG624422579
Comments: As Grown - No indication of post-growth treatment.	
This Laboratory Grown Diamond was created by High Pressure High Temperature (HPHT) growth process.	
Type II	



March 6, 2024	GI Report No LG594422579	
ROUND BRILLIANT		
24 - 7.30 X 4.51 MM		
Carat Weight	1.50 CARAT	
Color Grade	VVS 2	
Cut Grade	EXCELLENT	
Clarity	61.1%	
Table	65%	
Girdle	Medium to Slightly Thick (Faceted)	
Culet	Pointed	
Polish	EXCELLENT	
Symmetry	EXCELLENT	
Fluorescence	NONE	
Inscriptions(s)	681 LG594422579	
Comments:	<p>None - No indication of post-growth treatment.</p> <p>This Laboratory Grown Diamond was created by High Pressure High Temperature (HPHT) growth process. Type II</p>	