



ELECTRONIC COPY

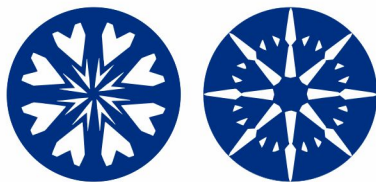
LABORATORY GROWN DIAMOND REPORT

February 29, 2024	
IGI Report Number	LG623492268
Description	LABORATORY GROWN DIAMOND
Shape and Cutting Style	ROUND BRILLIANT
Measurements	9.96 - 9.99 X 6.09 MM
GRADING RESULTS	
Carat Weight	3.70 CARATS
Color Grade	F
Clarity Grade	VS 1
Cut Grade	IDEAL

ADDITIONAL GRADING INFORMATION

Polish	EXCELLENT
Symmetry	EXCELLENT
Fluorescence	NONE
Inscription(s)	15 LG623492268

Comments: HEARTS & ARROWS
This Laboratory Grown Diamond was created by
Chemical Vapor Deposition (CVD) growth process and
may include post-growth treatment.
Type IIa

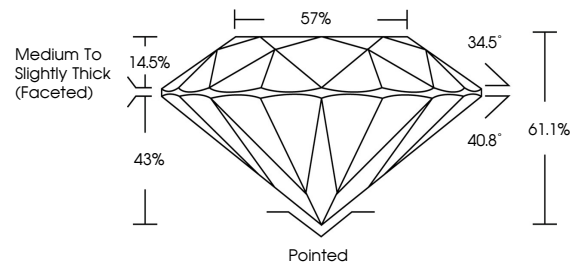


www.igi.org

LABORATORY GROWN DIAMOND REPORT

LG623492268
Report verification at igi.org

PROPORTIONS



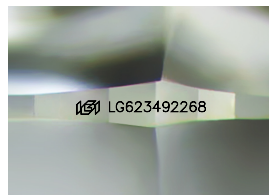
GRADING SCALES

CLARITY

IF	VVS ¹⁻²	VS ¹⁻²	SI ¹⁻²	I ¹⁻³
Internally Flawless	Very Very Slightly Included	Very Slightly Included	Slightly Included	Included

COLOR

D E F G H I J Faint Very Light Light



Sample Image Used



© IGI 2020, International Gemological Institute

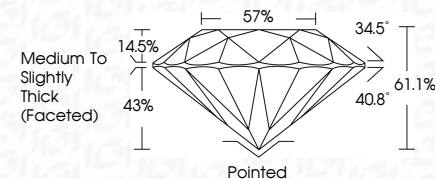
FD - 10 20



IGI

LABORATORY GROWN DIAMOND REPORT

February 29, 2024	
IGI Report Number	LG623492268
Description	LABORATORY GROWN DIAMOND
Shape and Cutting Style	ROUND BRILLIANT
Measurements	9.96 - 9.99 X 6.09 MM
GRADING RESULTS	
Carat Weight	3.70 CARATS
Color Grade	F
Clarity Grade	VS 1
Cut Grade	IDEAL



ADDITIONAL GRADING INFORMATION

Polish	EXCELLENT
Symmetry	EXCELLENT
Fluorescence	NONE
Inscription(s)	(G) LG623492268
Comments: HEARTS & ARROWS	
This Laboratory Grown Diamond was created by Chemical Vapor Deposition (CVD) growth process and may include post-growth treatment.	
Type IIa	

February 29, 2024
IGI Report No LG623492268
ROUND BRILLIANT

9.96 - 9.99 X 6.09 MM	3.70 CARATS	F
Carat Weight	VS 1	
Color Grade	IDEAL	
Clarity Grade	61.1%	
Cut Grade	57%	
Depth	Medium to Slightly Thick (faceted)	
Table	Pointed	
Girdle	EXCELLENT	
Fluorescence	NONE	
Measurements (s)	cert G2034027298	

Comments:
HEARTS & ARROWS
This Laboratory Grown Diamond was created by Chemical Vapor Deposition (CVD) growth process and may include post-growth treatment.