



ELECTRONIC COPY

LABORATORY GROWN DIAMOND REPORT

February 27, 2024	
IGI Report Number	LG623485582
Description	LABORATORY GROWN DIAMOND
Shape and Cutting Style	PEAR BRILLIANT
Measurements	12.33 X 7.52 X 4.54 MM

GRADING RESULTS

Carat Weight	2.44 CARATS
Color Grade	G
Clarity Grade	VVS 2

ADDITIONAL GRADING INFORMATION

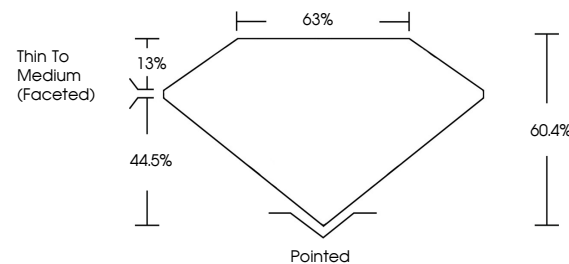
Polish	EXCELLENT
Symmetry	EXCELLENT
Fluorescence	NONE
Inscription(s)	 LG623485582

Comments: This Laboratory Grown Diamond was created by Chemical Vapor Deposition (CVD) growth process and may include post-growth treatment.
Type IIa

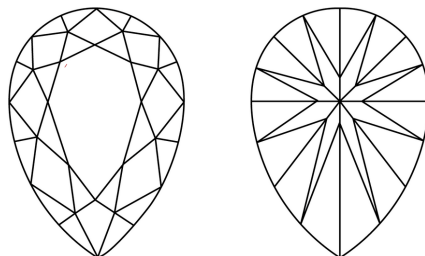
LABORATORY GROWN DIAMOND REPORT

LG623485582
Report verification at igi.org

PROPORTIONS



CLARITY CHARACTERISTICS



KEY TO SYMBOLS

Red symbols indicate internal characteristics.
Green symbols indicate external characteristics.

LABORATORY GROWN
DIAMOND REPORT

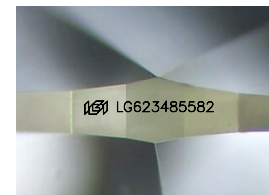
GRADING SCALES

CLARITY

IF	VVS ¹⁻²	VS ¹⁻²	SI ¹⁻²	I ¹⁻³
Internally Flawless	Very Very Slightly Included	Very Slightly Included	Slightly Included	Included

COLOR

D E F G H I J Faint Very Light Light



Sample Image Used

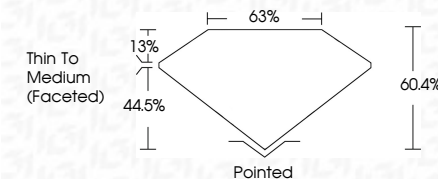


© IGI 2020, International Gemological Institute

FD - 10 20

LABORATORY GROWN DIAMOND REPORT

February 27, 2024	
IGI Report Number	LG623485582
Description	LABORATORY GROWN DIAMOND
Shape and Cutting Style	PEAR BRILLIANT
Measurements	12.33 X 7.52 X 4.54 MM
GRADING RESULTS	
Carat Weight	2.44 CARATS
Color Grade	G
Clarity Grade	VVS 2



ADDITIONAL GRADING INFORMATION

Polish	EXCELLENT
Symmetry	EXCELLENT
Fluorescence	NONE
Inscription(s)	(16) LG623485582

Comments: This Laboratory Grown Diamond was created by Chemical Vapor Deposition (CVD) growth process and may include post-growth treatment.
Type IIa



February 27, 2024	G Report No LG240455592	
PEAR BRILLIANT	2.44 CARATS	
12.33 X 7.52 X 4.54 MM	G	
Carat Weight	VVS 2	
Color Grade	60.4%	
	65%	
	Thin To Medium (Faceted)	
Clarity Grade	Polished	
Depth	EXCELLENT	
Table	EXCELLENT	
Grain	NONE	
Quilt	lgf LG240455592	
Polish		
Symmetry		
Fluorescence		
Measurements (mm)		

Comments:

This Laboratory Grown Diamond was created by Chemical Vapor Deposition (CVD) process and may include growth process and may include post-growth treatment.

type Ila

Comments:
This Laboratory Grown Diamond was created by Chemical Vapor Deposition (CVD) growth process and may include post-growth treatment.