



ELECTRONIC COPY

LG623440822

Report verification at igi.org

LABORATORY GROWN DIAMOND REPORT

March 1, 2024
IGI Report Number **LG623440822**

Description **LABORATORY GROWN
DIAMOND**

Shape and Cutting Style **HEART BRILLIANT**

Measurements **7.86 X 8.62 X 5.19 MM**

GRADING RESULTS

Carat Weight **2.05 CARATS**

Color Grade **D**

Clarity Grade **VS 1**

ADDITIONAL GRADING INFORMATION

Polish **EXCELLENT**

Symmetry **EXCELLENT**

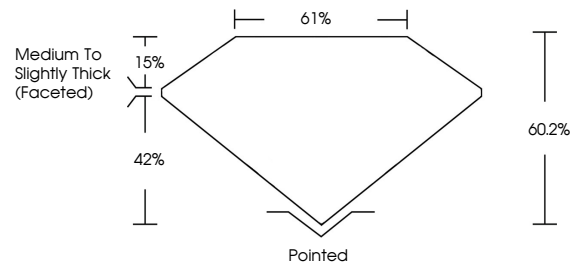
Fluorescence **NONE**

Inscription(s) **IGI LG623440822**

Comments: As Grown - No indication of post-growth treatment.

This Laboratory Grown Diamond was created by High Pressure High Temperature (HPHT) growth process. Type II

PROPORTIONS



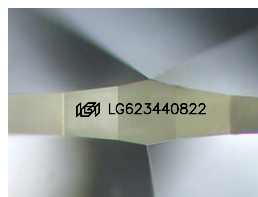
GRADING SCALES

CLARITY

IF	VVS ¹⁻²	VS ¹⁻²	SI ¹⁻²	I ¹⁻³
Internally Flawless	Very Very Slightly Included	Very Slightly Included	Slightly Included	Included

COLOR

D	E	F	G	H	I	J	Faint	Very Light	Light
---	---	---	---	---	---	---	-------	------------	-------



Sample Image Used

March 1, 2024
IGI Report Number **LG623440822**
Description **LABORATORY GROWN
DIAMOND**

Shape and Cutting Style **HEART BRILLIANT**

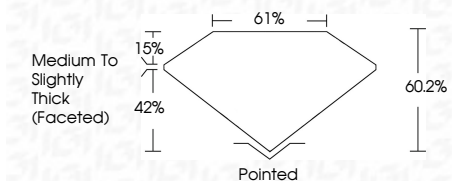
Measurements **7.86 X 8.62 X 5.19 MM**

GRADING RESULTS

Carat Weight **2.05 CARATS**

Color Grade **D**

Clarity Grade **VS 1**



ADDITIONAL GRADING INFORMATION

Polish **EXCELLENT**

Symmetry **EXCELLENT**

Fluorescence **NONE**

Inscription(s) **IGI LG623440822**

Comments: As Grown - No indication of post-growth treatment.

This Laboratory Grown Diamond was created by High Pressure High Temperature (HPHT) growth process. Type II



IGI



March 1, 2024
IGI Report No **LG623440822**
HEART BRILLIANT
7.86 X 8.62 X 5.19 MM
Carat Weight **2.05 CARATS**
Color Grade **D**
Clarity Grade **VS 1**
Depth **60.2%**
Table **61%**
Girdle **Medium to Slightly Thick (Faceted)**
Culet **Pointed**
Polish **EXCELLENT**
Symmetry **EXCELLENT**
Fluorescence **NONE**
Inscription(s) **IGI LG623440822**

Comments: As Grown - No indication of post-growth treatment.
This Laboratory Grown Diamond was created by High Pressure High Temperature (HPHT) growth process. Type II