



**ELECTRONIC COPY**

## LABORATORY GROWN DIAMOND REPORT

|                         |                             |
|-------------------------|-----------------------------|
| February 22, 2024       |                             |
| IGI Report Number       | LG622478979                 |
| Description             | LABORATORY GROWN<br>DIAMOND |
| Shape and Cutting Style | ROUND BRILLIANT             |
| Measurements            | 9.16 - 9.21 X 5.73 MM       |

## GRADING RESULTS

|               |             |
|---------------|-------------|
| Carat Weight  | 3.01 CARATS |
| Color Grade   | D           |
| Clarity Grade | VS 2        |
| Cut Grade     | IDEAL       |

### ADDITIONAL GRADING INFORMATION

|                |                                                                                                 |
|----------------|-------------------------------------------------------------------------------------------------|
| Polish         | EXCELLENT                                                                                       |
| Symmetry       | EXCELLENT                                                                                       |
| Fluorescence   | NONE                                                                                            |
| Inscription(s) |  LG622478979 |

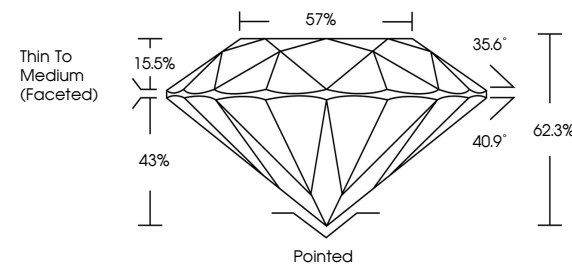
Comments: HEARTS & ARROWS  
This Laboratory Grown Diamond was created by  
Chemical Vapor Deposition (CVD) growth process and  
may include post-growth treatment.  
Type IIa

## LABORATORY GROWN DIAMOND REPORT

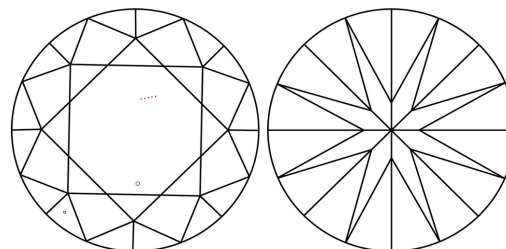
LG622478979

Report verification at [igi.org](http://igi.org)

## PROPORTIONS

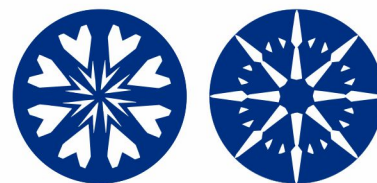


## CLARITY CHARACTERISTICS



## KEY TO SYMBOLS

Red symbols indicate internal characteristics.  
Green symbols indicate external characteristics.



**www.igi.org**

LABORATORY GROWN  
DIAMOND REPORT

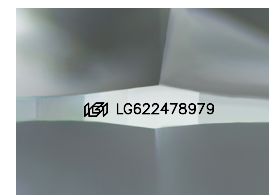
## GRADING SCALES

## CLARITY

| IF                  | VVS <sup>1-2</sup>          | VS <sup>1-2</sup>      | SI <sup>1-2</sup> | I <sup>1-3</sup> |
|---------------------|-----------------------------|------------------------|-------------------|------------------|
| Internally Flawless | Very Very Slightly Included | Very Slightly Included | Slightly Included | Included         |

**COLOR**

D E F G H I J Faint Very Light Light



Sample Image Used



© IGI 2020, International Gemological Institute

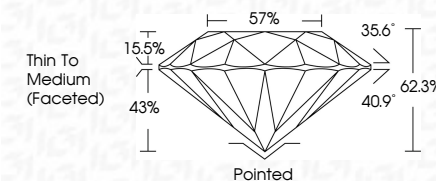
FD - 10 20

THIS DOCUMENT WAS PRODUCED WITH THE FOLLOWING SECURITY MEASURES: SPECIAL DOCUMENT PAPER, INK SCREENS, WATERMARK BACKGROUND DESIGNS, HOLOGRAM AND OTHER SECURITY FEATURES NOT LISTED AND DO EXCEED DOCUMENT SECURITY INDUSTRY GUIDELINES

## LABORATORY GROWN DIAMOND REPORT

|                         |                             |
|-------------------------|-----------------------------|
| February 22, 2024       |                             |
| IGI Report Number       | LG622478979                 |
| Description             | LABORATORY GROWN<br>DIAMOND |
| Shape and Cutting Style | ROUND BRILLIANT             |
| Measurements            | 9.16 - 9.21 X 5.73 MM       |

| GRADING RESULTS |             |
|-----------------|-------------|
| Carat Weight    | 3.01 CARATS |
| Color Grade     | D           |
| Clarity Grade   | VS 2        |
| Cut Grade       | IDEAL       |



### ADDITIONAL GRADING INFORMATION

|                                                                                                                                                                                   |                                                                                                   |
|-----------------------------------------------------------------------------------------------------------------------------------------------------------------------------------|---------------------------------------------------------------------------------------------------|
| Polish                                                                                                                                                                            | EXCELLENT                                                                                         |
| Symmetry                                                                                                                                                                          | EXCELLENT                                                                                         |
| Fluorescence                                                                                                                                                                      | NONE                                                                                              |
| Inscription(s)                                                                                                                                                                    |  LG622478979 |
| Comments: HEARTS & ARROWS<br>This Laboratory Grown Diamond was created by<br>Chemical Vapor Deposition (CVD) growth process and<br>may include post-growth treatment.<br>Type IIa |                                                                                                   |



February 22, 2024  
 IGI Report No LG622478979  
 BEYOND BRILLIANT

|                       |             |               |                             |                  |
|-----------------------|-------------|---------------|-----------------------------|------------------|
| 9.16 - 9.21 X 5.73 MM | Color Grade | Clarity Grade | VS 2                        | 3.01 CARATS<br>D |
| Carat Weight          | Cut Grade   | IDEAL         | 62.9%                       |                  |
| Depth                 | Table       | 57%           | Thin To Medium<br>(Faceted) |                  |
| Girdle                |             |               |                             |                  |
| Culet                 | Pointed     |               |                             |                  |
| Polish                | Excellent   |               |                             |                  |
| Symmetry              | Excellent   |               |                             |                  |
| Fluorescence          | None        |               |                             |                  |

**Comments:**  
HEARTS & ARROWS  
This Laboratory Grown Diamond was  
created by Chemical Vapor Deposition  
(CVD) growth process and may include  
post-growth treatment.