



ELECTRONIC COPY

LG622474636
Report verification at igi.org

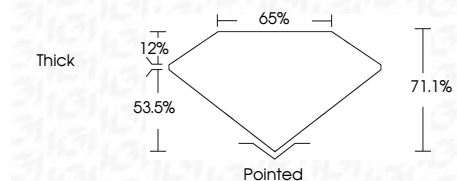


February 19, 2024
IGI Report Number **LG622474636**
Description **LABORATORY GROWN DIAMOND**
Shape and Cutting Style **CUT CORNERED
RECTANGULAR MODIFIED
BRILLIANT**

Measurements **7.71 X 5.50 X 3.91 MM**

GRADING RESULTS

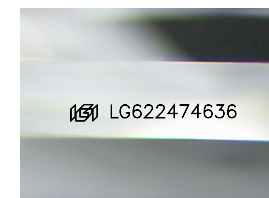
Carat Weight **1.51 CARAT**
Color Grade **D**
Clarity Grade **VVS 2**



ADDITIONAL GRADING INFORMATION

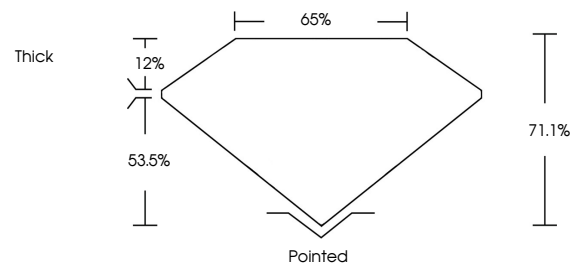
Polish **EXCELLENT**
Symmetry **EXCELLENT**
Fluorescence **NONE**
Inscription(s) **IGI LG622474636**

Comments: As Grown - No indication of post-growth treatment. This Laboratory Grown Diamond was created by High Pressure High Temperature (HPHT) growth process. Type II

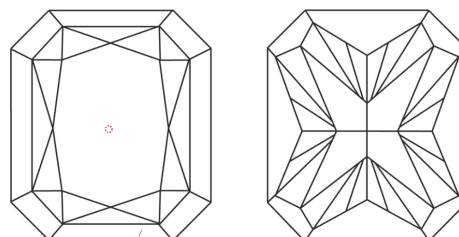


Sample Image Used

PROPORTIONS



CLARITY CHARACTERISTICS



KEY TO SYMBOLS

Red symbols indicate internal characteristics.
Green symbols indicate external characteristics.

COLOR

D E F G H I J Faint Very Light Light

CLARITY

IF VS¹⁻² VS¹⁻² SI¹⁻² I¹⁻³

Internally Flawless Very Very Slightly Included Very Slightly Included Slightly Included Included

| | | | | | | | | | | | | | |
|-------------------|---------------------------|---------------------------------------|------------|-------|--------|-------|--------|----------|--------------|----------------|-----------|------|-----------------|
| February 19, 2024 | IGI Report No LG622474636 | CUT CORNERED RECT. MODIFIED BRILLIANT | 1.51 CARAT | D | VVS 2 | 71.1% | 65% | Thick | Pointed | EXCELLENT | EXCELLENT | NONE | IGI LG622474636 |
| Carat Weight | Color Grade | Clarity Grade | Depth | Table | Girdle | Culet | Polish | Symmetry | Fluorescence | Inscription(s) | | | |

Comments: No indication of post-growth treatment. This Laboratory Grown Diamond was created by High Pressure High Temperature (HPHT) growth process. Type II