



LABORATORY GROWN DIAMOND REPORT

February 22, 2024	
IGI Report Number	LG622470249
Description	LABORATORY GROWN DIAMOND
Shape and Cutting Style	CUT CORNERED RECTANGULAR MODIFIED BRILLIANT
Measurements	8.46 X 5.63 X 3.84 MM

ADDITIONAL GRADING INFORMATION

Polish	EXCELLENT
Symmetry	EXCELLENT
Fluorescence	NONE
Inscription(s)	 LG622470249

Comments: This Laboratory Grown Diamond was created by Chemical Vapor Deposition (CVD) growth process and may include post-growth treatment.
Type IIa

LABORATORY GROWN DIAMOND REPORT

LG622470249

Report verification at [igi.org](https://www.igi.org)

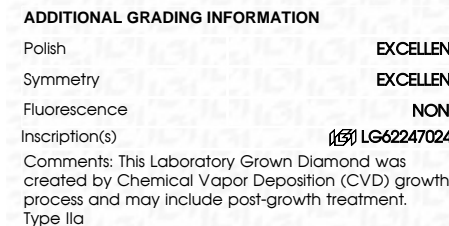
PROPORTIONS

CLARITY CHARACTERISTICS

KEY TO SYMBOLS

THIS DOCUMENT WAS PRODUCED WITH THE FOLLOWING SECURITY MEASURES: SPECIAL DOCUMENT PAPER, INK SCREENS, WATERMARK, BACKGROUND DESIGNS, HOLOGRAM AND OTHER SECURITY FEATURES NOT LISTED AND DO EXCEED DOCUMENT SECURITY INDUSTRY GUIDELINE

February 22, 2024	
IGI Report Number	LG622470249
Description	LABORATORY GROWN DIAMOND
Shape and Cutting Style	CUT CORNERED RECTANGULAR MODIFIED BRILLIANT
Measurements	8.46 X 5.63 X 3.84 MM
GRADING RESULTS	
Carat Weight	1.58 CARAT
Color Grade	E
Clarity Grade	VS 1



February 22, 2024	GI Report No LG52270249	CU CORNERED RECT. MODIFIED BRILLIANT
4.45 X 5.63 X 3.84 MM		
Carat Weight	1.58 CARAT	
Color Grade	E	
Clarity Grade	VS 1	
Depth	68.2%	
Table	66%	
Girdle	Medium	
Culet	Pointed	
Polish	EXCELLENT	
Symmetry	EXCELLENT	
Fluorescence	NONE	
Inscription(s)	681 LG52270249	
Comments:	<p>This Laboratory Grown Diamond was grown using a CVD growth process and may include post-growth treatment.</p> <p>Type IIA</p>	