



**ELECTRONIC COPY**

LG621491057  
Report verification at igi.org



July 17, 2024

IGI Report Number **LG621491057**

Description **LABORATORY GROWN DIAMOND**

Shape and Cutting Style **EMERALD CUT**

Measurements **8.81 X 5.91 X 3.87 MM**

**GRADING RESULTS**

Carat Weight **2.02 CARATS**

Color Grade **FANCY VIVID GREEN**

Clarity Grade **VS 2**

**LABORATORY GROWN DIAMOND REPORT**

July 17, 2024

IGI Report Number **LG621491057**

Description **LABORATORY GROWN DIAMOND**

Shape and Cutting Style **EMERALD CUT**

Measurements **8.81 X 5.91 X 3.87 MM**

**GRADING RESULTS**

Carat Weight **2.02 CARATS**

Color Grade **FANCY VIVID GREEN**

Clarity Grade **VS 2**

**ADDITIONAL GRADING INFORMATION**

Polish **EXCELLENT**

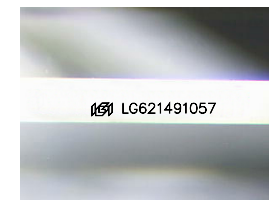
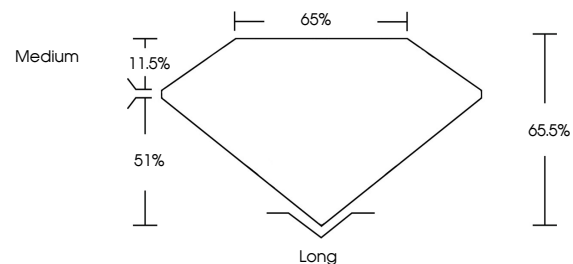
Symmetry **EXCELLENT**

Fluorescence **VERY SLIGHT**

Inscription(s) **LG621491057**

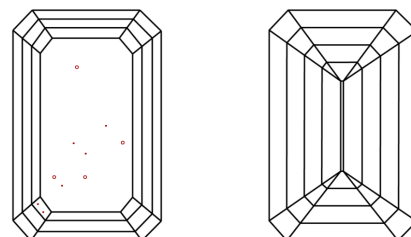
Comments: This Laboratory Grown Diamond was created by Chemical Vapor Deposition (CVD) growth process. Indications of post-growth treatment.

**PROPORTIONS**



Sample Image Used

**CLARITY CHARACTERISTICS**



**KEY TO SYMBOLS**

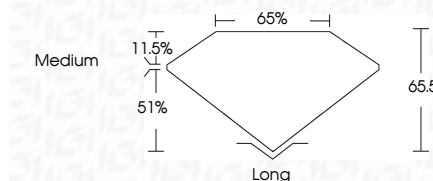
Red symbols indicate internal characteristics.  
Green symbols indicate external characteristics.

**COLOR**

D E F G H I J Faint Very Light Light

**CLARITY**

IF	VS <sup>1-2</sup>	VS <sup>1-2</sup>	SI <sup>1-2</sup>	I <sup>1-3</sup>
Internally Flawless	Very Very Slightly Included	Very Slightly Included	Slightly Included	Included



**ADDITIONAL GRADING INFORMATION**

Polish **EXCELLENT**

Symmetry **EXCELLENT**

Fluorescence **VERY SLIGHT**

Inscription(s) **LG621491057**

Comments: This Laboratory Grown Diamond was created by Chemical Vapor Deposition (CVD) growth process. Indications of post-growth treatment.



July 17, 2024  
IGI Report No. LG621491057  
**EMERALD CUT**  
8.81 X 5.91 X 3.87 MM  
2.02 CARATS  
FANCY VIVID GREEN  
VS 2  
65.5%  
Medium  
Long  
EXCELLENT  
EXCELLENT  
VERY SLIGHT  
IGI LG621491057

Comments: This Laboratory Grown Diamond was created by Chemical Vapor Deposition (CVD) growth process. Indications of post-growth treatment.