



ELECTRONIC COPY

LABORATORY GROWN DIAMOND REPORT

| | |
|-------------------------|-----------------------------|
| February 15, 2024 | |
| IGI Report Number | LG621407049 |
| Description | LABORATORY GROWN DIAMOND |
| Shape and Cutting Style | PRINCESS CUT |
| Measurements | 5.37 X 5.33 X 3.89 MM |

GRADING RESULTS

| | |
|---------------|------------------|
| Carat Weight | 1.01 CARAT |
| Color Grade | FANCY VIVID PINK |
| Clarity Grade | VS 1 |

ADDITIONAL GRADING INFORMATION

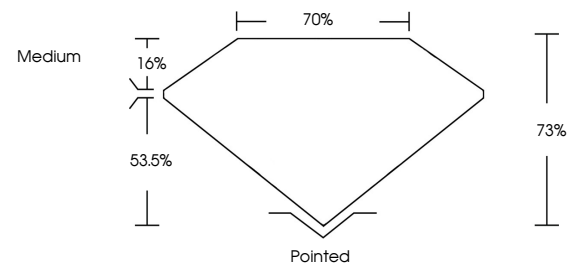
| | |
|----------------|---|
| Polish | EXCELLENT |
| Symmetry | EXCELLENT |
| Fluorescence | SLIGHT |
| Inscription(s) |  LG621407049 |

Comments: This Laboratory Grown Diamond was created by High Pressure High Temperature (HPHT) growth process.
Indications of post-growth treatment.

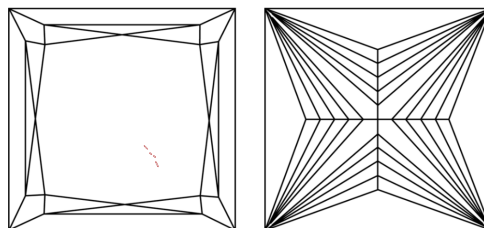
LABORATORY GROWN DIAMOND REPORT

LG621407049
Report verification at igi.org

PROPORTIONS



CLARITY CHARACTERISTICS



KEY TO SYMBOLS

Red symbols indicate internal characteristics.
Green symbols indicate external characteristics.

LABORATORY GROWN
DIAMOND REPORT

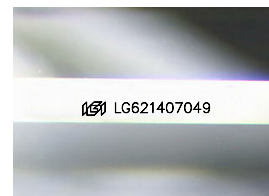
GRADING SCALES

CLARITY

| IF | VVS ¹⁻² | VS ¹⁻² | SI ¹⁻² | I ¹⁻³ |
|---------------------|-----------------------------|------------------------|-------------------|------------------|
| Internally Flawless | Very Very Slightly Included | Very Slightly Included | Slightly Included | Included |

COLOR

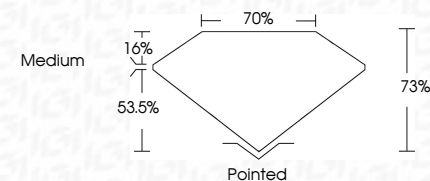
| | | | | | | | | | |
|------------|---|---|-------------|---|-------|---|---------------|------------|-------------|
| D | E | F | G | H | I | J | Faint | Very Light | Light |
| Light Tint | | | Fancy Light | | Fancy | | Fancy Intense | | Fancy Vivid |



Sample Image Used



| | |
|-------------------------|-----------------------------|
| February 15, 2024 | |
| IGI Report Number | LG621407049 |
| Description | LABORATORY GROWN DIAMOND |
| Shape and Cutting Style | PRINCESS CUT |
| Measurements | 5.37 X 5.33 X 3.89 MM |
| GRADING RESULTS | |
| Carat Weight | 1.01 CARAT |
| Color Grade | FANCY VIVID PINK |
| Clarity Grade | VS 1 |



ADDITIONAL GRADING INFORMATION

| | |
|----------------|-----------------|
| Polish | EXCELLENT |
| Symmetry | EXCELLENT |
| Fluorescence | SLIGHT |
| Inscription(s) | 16 LG-621407049 |

Comments: This Laboratory Grown Diamond was created by High Pressure High Temperature (HPHT) growth process.
Indications of post-growth treatment.



IG



© IGI 2020, International Gemological Institute

FD - 10 20

www.igi.org

THIS DOCUMENT WAS PRODUCED WITH THE FOLLOWING SECURITY MEASURES: SPECIAL DOCUMENT PAPER, INK SCREENS, WATERMARK, BACKGROUND DESIGNS, HOLOGRAM AND OTHER SECURITY FEATURES NOT LISTED AND DO EXCEED DOCUMENT SECURITY INDUSTRY GUIDELINE

February 15, 2024
 IGI Report No LG621407049
 PRINCESS CLIT

| | | |
|-----------------------|---------------|------------------|
| 3.37 X 5.33 X 3.69 MM | Carat Weight | 1.01 CARAT |
| | Color Grade | FANCY VIVID PINK |
| | Clarity Grade | VS 1 |
| | Depth | 73% |
| | Table | 70% |
| | Girdle | Medium |
| | Culet | Pointed |
| | Polish | EXCELLENT |
| | Symmetry | EXCELLENT |
| | Fluorescence | SLIGHT |

Comments:
This Laboratory Grown Diamond was created by High Pressure High Temperature (HPHT) growth process. All features of most natural diamonds are present.