



## LABORATORY GROWN DIAMOND REPORT

Description	LABORATORY GROWN DIAMOND
-------------	-----------------------------

Measurements 10.24 X 7.06 X 4.67 MM

Carat Weight 3.31 CARATS

Clarity Grade WS 1

## Polish EXCELLENT

Symmetry **EXCELLENT**Fluorescence **NONE**Inscription(s)  LG620459879

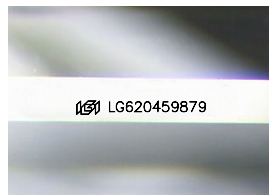
Comments: This Laboratory Grown Diamond was created by Chemical Vapor Deposition (CVD) growth process and may include post-growth treatment.  
Type IIa

LG620459879

Report verification at [igi.org](http://igi.org)

IF	VVS <sup>1-2</sup>	VS <sup>1-2</sup>	SI <sup>1-2</sup>	I <sup>1-3</sup>
Internally Flawless	Very Very Slightly Included	Very Slightly Included	Slightly Included	Included

D E F G H I J Faint Very Light Light



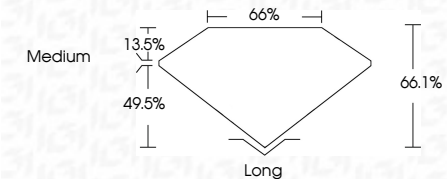
Sample Image Used

Shape and Cutting Style **EMERALD CUT**

Measurements 10.24 X 7.06 X 4.67 MM

Carat Weight **3.31 CARATS**

Color Grade **F**

Clarity Grade **VVS 1**Polish **EXCELLENCE**Symmetry **EXCELLENCE**

Fluorescence NONI

Inscription(s)  LG62045987

Comments: This Laboratory Grown Diamond was created by Chemical Vapor Deposition (CVD) growth process and may include post-growth treatment.  
Type IIa



© IGI 2020, International Gemological Institute

FD - 10 20



**www.igi.org**

February 12, 2024  
 IGI Report No LG620459879  
 EMERALD CITT

10.24 X 7.05 X 4.57 MM	Carat Weight	3.31 CARATS
	Color Grade	F
	Clarity Grade	VS 1
	Depth	66.1%
	Table	66%
	Girdle	Medium
	Culet	Long
	Polish	EXCELLENT
	Symmetry	EXCELLENT
	Fluorescence	NONE
	Comments	See 1 2 3 4 5 6 7 8 9 10

**Comments:**  
This Laboratory Grown Diamond was created by Chemical Vapor Deposition (CVD) growth process and may include post-growth treatment.  
Type IIa