



## LABORATORY GROWN DIAMOND REPORT

## GRADING RESULTS

### ADDITIONAL GRADING INFORMATION

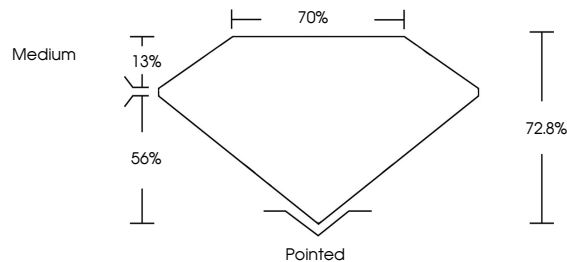
Inscription(s)  LG620438465

LABORATORY GROWN DIAMOND REPORT

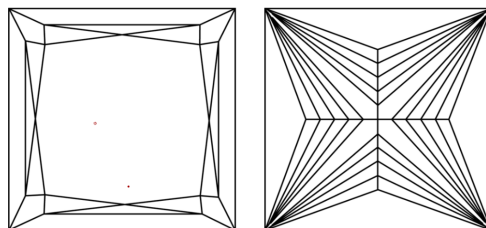
LG620438465

Report verification at [iglg.org](https://www.iglg.org)

## PROPORTIONS



## CLARITY CHARACTERISTICS



## KEY TO SYMBOLS

Red symbols indicate internal characteristics.  
Green symbols indicate external characteristics.

## LABORATORY GROWN DIAMOND REPORT

February 19, 2024	
IGI Report Number	LG620438465
Description	LABORATORY GROWN DIAMOND
Shape and Cutting Style	PRINCESS CUT
Measurements	6.20 X 6.15 X 4.48 MM
<b>GRADING RESULTS</b>	
Carat Weight	1.53 CARAT
Color Grade	E
Clarity Grade	VVS 2

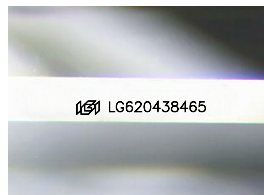
## GRADING SCALES

## CLARITY

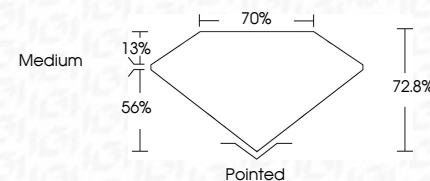
IF	VVS <sup>1-2</sup>	VS <sup>1-2</sup>	SI <sup>1-2</sup>	I <sup>1-3</sup>
Internally Flawless	Very Very Slightly Included	Very Slightly Included	Slightly Included	Included

**COLOR**

D E F G H I J Faint Very Light Light



Sample Image Used



### ADDITIONAL GRADING INFORMATION

Polish	EXCELLENT
Symmetry	EXCELLENT
Fluorescence	NONE
Inscription(s)	15 LG-620438465

Comments: This Laboratory Grown Diamond was created by Chemical Vapor Deposition (CVD) growth process and may include post-growth treatment.  
Type IIa



© IGI 2020, International Gemological Institute

FD - 10 20

**www.igi.org**

THIS DOCUMENT WAS PRODUCED WITH THE FOLLOWING SECURITY MEASURES: SPECIAL DOCUMENT PAPER, INK SCREENS, WATERMARK, BACKGROUND DESIGNS, HOLOGRAM AND OTHER SECURITY FEATURES NOT LISTED AND DO EXCEED DOCUMENT SECURITY INDUSTRY GUIDELINES

February 19, 2024	1.53 CARAT
GI Report No LG520438465	
PRINCIPAL CUT	
5.20 X 6.15 X 4.48 MM	
Carat Weight	VVS 2
Color Grade	E
Clarity Grade	72.8%
Depth	70%
Table	Medium
Girdle	
Culet	Pointed
Polish	EXCELLENT
Symmetry	EXCELLENT
Fluorescence	NONE
Inscription(s)	6891 LG520438465
Comments:	
This Laboratory Grown Diamond was created by Chemical Vapor Deposition (CVD) growth process and may include post-growth treatment.	
Type IId	