



## LABORATORY GROWN DIAMOND REPORT

## GRADING RESULTS

### ADDITIONAL GRADING INFORMATION

Inscription(s)  LG620421959

Comments: As Grown - No indication of post-growth treatment.  
This Laboratory Grown Diamond was created by High Pressure High Temperature (HPHT) growth process.  
Type II

LG620421959

Report verification at [igi.org](http://igi.org)

Diagram illustrating the proportions of a diamond-shaped stone. The stone is characterized by a 'Pointed' bottom and a 'Slightly Thick (Faceted)' top. The dimensions are defined as follows:

- Top width: 58%
- Top thickness: 15%
- Bottom thickness: 48.5%
- Overall height: 67.2%
- Bottom shape: Pointed

Red symbols indicate internal characteristics.  
Green symbols indicate external characteristics.

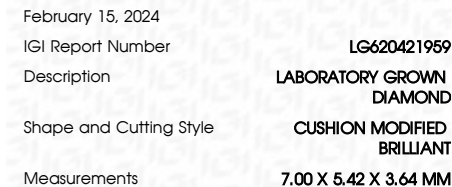
## GRADING SCALES

IF	VVS <sup>1-2</sup>	VS <sup>1-2</sup>	SI <sup>1-2</sup>	I <sup>1-3</sup>
Internally Flawless	Very Very Slightly Included	Very Slightly Included	Slightly Included	Included

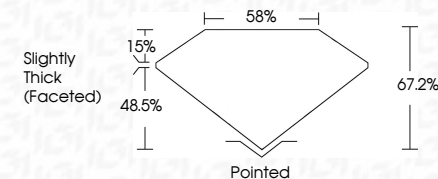
D E F G H I J Faint Very Light Light



Sample Image Used



Carat Weight	1.04 CARAT
Color Grade	D
Clarity Grade	VS 1



Polish	EXCELLENT
Symmetry	EXCELLENT
Fluorescence	NONE
Inscription(s)	15 LG 620421955

Comments: As Grown - No indication of post-growth treatment.  
This Laboratory Grown Diamond was created by High Pressure High Temperature (HPHT) growth process.  
Type II



© IGI 2020, International Gemological Institute

FD - 10 20

**www.igi.org**

THIS DOCUMENT WAS PRODUCED WITH THE FOLLOWING SECURITY MEASURES: SPECIAL DOCUMENT PAPER, INK SCREENS, WATERMARK, BACKGROUND DESIGNS, HOLOGRAM AND OTHER SECURITY FEATURES NOT LISTED AND DO EXCEED DOCUMENT SECURITY INDUSTRY GUIDELINES

[illegible]