



**ELECTRONIC COPY**

## LABORATORY GROWN DIAMOND REPORT

February 3, 2024	
IGI Report Number	LG620404836
Description	LABORATORY GROWN DIAMOND
Shape and Cutting Style	ROUND BRILLIANT
Measurements	8.09 - 8.13 X 4.92 MM
<b>GRADING RESULTS</b>	
Carat Weight	1.96 CARAT
Color Grade	D
Clarity Grade	VVS 2
Cut Grade	IDEAL

### ADDITIONAL GRADING INFORMATION

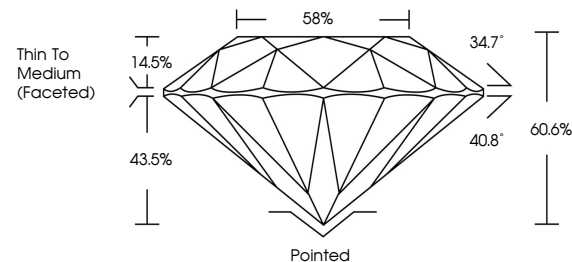
Polish	EXCELLENT
Symmetry	EXCELLENT
Fluorescence	NONE
Inscription(s)	LG620404836

Comments: HEARTS & ARROWS  
This Laboratory Grown Diamond was created by  
Chemical Vapor Deposition (CVD) growth process and  
may include post-growth treatment.  
Type IIa

## LABORATORY GROWN DIAMOND REPORT

LG620404836  
Report verification at [lgi.org](https://lgi.org)

## PROPORTIONS



**www.igi.org**

LABORATORY GROWN  
DIAMOND REPORT

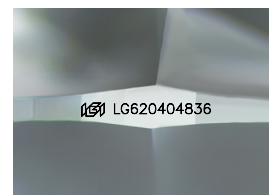
## GRADING SCALES

## CLARITY

IF	VVS <sup>1-2</sup>	VS <sup>1-2</sup>	SI <sup>1-2</sup>	I <sup>1-3</sup>
Internally Flawless	Very Very Slightly Included	Very Slightly Included	Slightly Included	Included

**COLOR**

D E F G H I J Faint Very Light Light



Sample Image Used



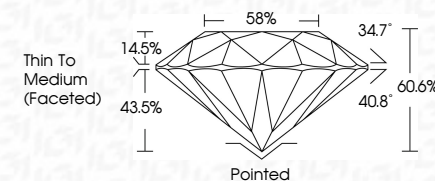
© IGI 2020, International Gemological Institute

FD - 10 20

THIS DOCUMENT WAS PRODUCED WITH THE FOLLOWING SECURITY MEASURES: SPECIAL DOCUMENT PAPER, INK SCREENS, WATERMARK, BACKGROUND DESIGNS, HOLOGRAM AND OTHER SECURITY FEATURES NOT LISTED AND DO EXCEED DOCUMENT SECURITY INDUSTRY GUIDELINES

## LABORATORY GROWN DIAMOND REPORT

February 3, 2024	
IGI Report Number	LG620404836
Description	LABORATORY GROWN DIAMOND
Shape and Cutting Style	ROUND BRILLIANT
Measurements	8.09 - 8.13 X 4.92 MM
<b>GRADING RESULTS</b>	
Carat Weight	1.96 CARAT
Color Grade	D
Clarity Grade	VVS 2
Cut Grade	IDEAL



### ADDITIONAL GRADING INFORMATION

Polish	EXCELLENT
Symmetry	EXCELLENT
Fluorescence	NONE
Inscription(s)	 LG-620404836

Comments: HEARTS & ARROWS  
This Laboratory Grown Diamond was created by  
Chemical Vapor Deposition (CVD) growth process and  
may include post-growth treatment.  
Type IIa



February 3, 2024	GI Report No LG200404836	1.56 CARAT	VVS 2	Thin to Medium (Faceted)	Pointed	NONE	1691 LG200404836
ROUND BRILLIANT	0.09 - 0.13 X 4.92 MM	Color Weight	IDEAL		EXCELLENT		
		Color Grade	60/65		VERY GOOD		
		Clarity Grade	85%		VERY GOOD		
		Clarity			VERY GOOD		
		Depth	Our Grade		Symmetry		Component Grading by AGS/MS This Laboratory Grown Diamond was created by Chemical Vapor Deposition (CVD) growth process and may include post-growth treatment.
		Table	Grade		Fluorescence		
					Inscriptions(s)		
					Quiet		
					Polish		