



**INTERNATIONAL
GEMOLOGICAL
INSTITUTE**

ELECTRONIC COPY

**LABORATORY GROWN
DIAMOND REPORT**

LG619436144

**IGI LABORATORY GROWN
DIAMOND ID REPORT**

February 5, 2024
IGI Report Number **LG619436144**
ROUND BRILLIANT
5.57 - 5.61 X 3.45 MM
Carat Weight 0.66 CARAT
Color Grade FANCY INTENSE PINK
Clarity Grade VS 1
Cut Grade IDEAL
Polish VERY GOOD
Symmetry EXCELLENT
Fluorescence SLIGHT
Inscription(s) LG619436144

LABORATORY GROWN DIAMOND REPORT

IGI LABORATORY GROWN DIAMOND IDENTIFICATION REPORT

February 5, 2024
IGI Report Number LG619436144
Description LABORATORY GROWN DIAMOND
Shape and Cutting Style ROUND BRILLIANT
Measurements 5.57 - 5.61 X 3.45 MM



Sample Image Used

Comments: This Laboratory Grown Diamond was created by Chemical Vapor Deposition (CVD) growth process. Indications of post-growth treatment.

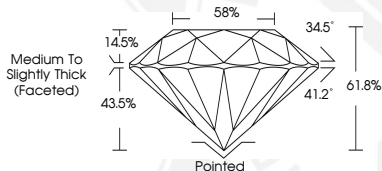
GRADING RESULTS

Carat Weight 0.66 CARAT
Color Grade FANCY INTENSE PINK
Clarity Grade VS 1
Cut Grade IDEAL

ADDITIONAL GRADING INFORMATION

Polish VERY GOOD
Symmetry EXCELLENT
Fluorescence SLIGHT
Inscription(s) LG619436144

Comments: This Laboratory Grown Diamond was created by Chemical Vapor Deposition (CVD) growth process. Indications of post-growth treatment.



**IGI LABORATORY GROWN
DIAMOND ID REPORT**

February 5, 2024
IGI Report Number **LG619436144**
ROUND BRILLIANT
5.57 - 5.61 X 3.45 MM
Carat Weight 0.66 CARAT
Color Grade FANCY INTENSE PINK
Clarity Grade VS 1
Cut Grade IDEAL
Polish VERY GOOD
Symmetry EXCELLENT
Fluorescence SLIGHT
Inscription(s) LG619436144

Comments: This Laboratory Grown Diamond was created by Chemical Vapor Deposition (CVD) growth process. Indications of post-growth treatment.

THIS DOCUMENT WAS PRODUCED WITH THE FOLLOWING SECURITY MEASURES: SPECIAL DOCUMENT PAPER, INK SCREENS, WATERMARK, BACKGROUND DESIGN, HOLOGRAM AND OTHER SECURITY FEATURES NOT LISTED AND DO EXCEED DOCUMENT SECURITY INDUSTRY GUIDELINES.

For terms & conditions and to verify this report, please visit www.igi.org