



ELECTRONIC COPY

LABORATORY GROWN DIAMOND REPORT

January 29, 2024	
IGI Report Number	LG619423359
Description	LABORATORY GROWN DIAMOND
Shape and Cutting Style	ROUND BRILLIANT
Measurements	6.87 - 6.95 X 4.16 MM

GRADING RESULTS

Carat Weight	1.23 CARAT
Color Grade	E
Clarity Grade	VS 1
Cut Grade	IDEAL

ADDITIONAL GRADING INFORMATION

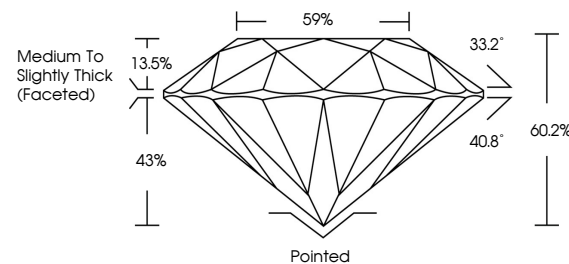
Polish	EXCELLENT
Symmetry	EXCELLENT
Fluorescence	NONE
Inscription(s)	 LG619423359

Comments: This Laboratory Grown Diamond was created by Chemical Vapor Deposition (CVD) growth process and may include post-growth treatment.
Type IIa

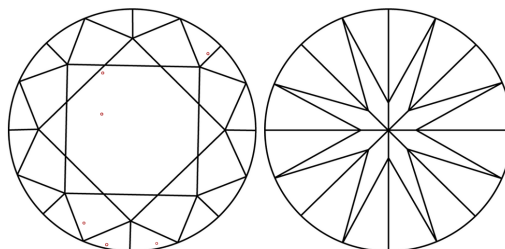
LABORATORY GROWN DIAMOND REPORT

LG619423359
Report verification at [igi.org](https://www.igi.org)

PROPORTIONS



CLARITY CHARACTERISTICS



KEY TO SYMBOLS

Red symbols indicate internal characteristics.
Green symbols indicate external characteristics.

LABORATORY GROWN
DIAMOND REPORT

GRADING SCALES

CLARITY

IF	VVS ¹⁻²	VS ¹⁻²	SI ¹⁻²	I ¹⁻³
Internally Flawless	Very Very Slightly Included	Very Slightly Included	Slightly Included	Included

COLOR

D E F G H I J Faint Very Light Light



Sample Image Used

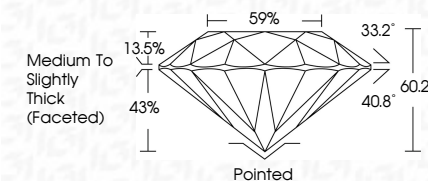


© IGI 2020, International Gemological Institute

FD - 10 20



January 29, 2024	
IGI Report Number	LG619423359
Description	LABORATORY GROWN DIAMOND
Shape and Cutting Style	ROUND BRILLIANT
Measurements	6.87 - 6.95 X 4.16 MM
GRADING RESULTS	
Carat Weight	1.23 CARAT
Color Grade	E
Clarity Grade	VS 1
Cut Grade	IDEAL



ADDITIONAL GRADING INFORMATION

Polish	EXCELLENT
Symmetry	EXCELLENT
Fluorescence	NONE
Inscription(s)	LG6 LG619423359
<p>Comments: This Laboratory Grown Diamond was created by Chemical Vapor Deposition (CVD) growth process and may include post-growth treatment.</p> <p>Type IIa</p>	

January 29, 2024	1.23 CARAT
G Report No LG619423359	E
VS1	
IDEAL	
60.2%	
59%	
Medium to slightly Thick Faceted	
Polished	
EXCELLENT	
EXCELLENT	
NONE	
LG619423359	

Comments:

The Laboratory Grown Diamond was created by Chemical Vapor Deposition (CVD) growth process and may include natural inclusions and/or growth features.