



ELECTRONIC COPY

LABORATORY GROWN DIAMOND REPORT

March 8, 2024	
IGI Report Number	LG618457113
Description	LABORATORY GROWN DIAMOND
Shape and Cutting Style	ROUND BRILLIANT
Measurements	8.03 - 8.09 X 5.03 MM

GRADING RESULTS

Carat Weight	2.00 CARATS
Color Grade	FANCY INTENSE BLUE
Clarity Grade	SI 1
Cut Grade	IDEAL

ADDITIONAL GRADING INFORMATION

Polish	EXCELLENT
Symmetry	EXCELLENT
Fluorescence	NONE
Inscription(s)	 LG618457113

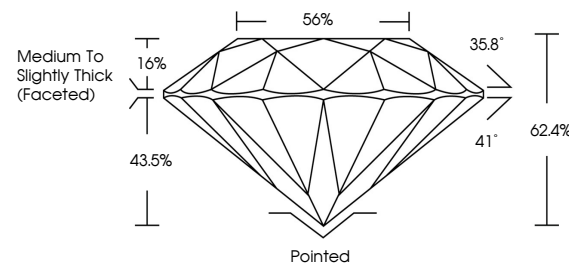
Comments: This Laboratory Grown Diamond was created by Chemical Vapor Deposition (CVD) growth process.
Indications of post-growth treatment.

LABORATORY GROWN DIAMOND REPORT

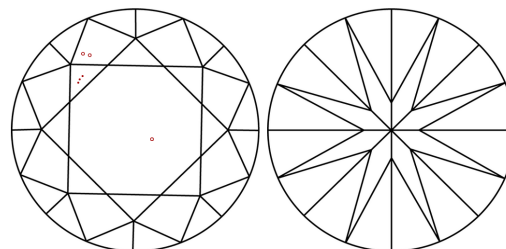
LG618457113

Report verification at igi.org

PROPORTIONS



CLARITY CHARACTERISTICS



KEY TO SYMBOLS

Red symbols indicate internal characteristics.
Green symbols indicate external characteristics.

LABORATORY GROWN
DIAMOND REPORT

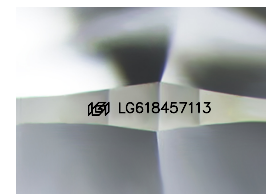
GRADING SCALES

CLARITY

IF	VVS ¹⁻²	VS ¹⁻²	SI ¹⁻²	I ¹⁻³
Internally Flawless	Very Very Slightly Included	Very Slightly Included	Slightly Included	Included

COLOR

D	E	F	G	H	I	J	Faint	Very Light	Light
Light Tint			Fancy Light		Fancy		Fancy Intense	Fancy Vivid	



Sample Image Used

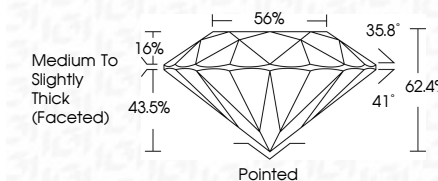


© IGI 2020, International Gemological Institute

FD - 10 20



March 8, 2024	
IGI Report Number	LG618457113
Description	LABORATORY GROWN DIAMOND
Shape and Cutting Style	ROUND BRILLIANT
Measurements	8.03 - 8.09 X 5.03 MM
GRADING RESULTS	
Carat Weight	2.00 CARATS
Color Grade	FANCY INTENSE BLUE
Clarity Grade	SI 1
Cut Grade	IDEAL



ADDITIONAL GRADING INFORMATION

Polish	EXCELLENT
Symmetry	EXCELLENT
Fluorescence	NONE
Inscription(s)	 LG618457113
<p>Comments: This Laboratory Grown Diamond was created by Chemical Vapor Deposition (CVD) growth process.</p> <p>Indications of post-growth treatment.</p>	

March 8, 2024	2.00 CARATS
GJ Report No. G619457113	FANCY INTENSE BLUE
ROUND BRILLIANT	S I 1
	IDP/L
	62.4%
	56%
	Medium to Slightly Thick (Faced)
	Pinkish
	EXCELLENT
	EXCELLENT
	NONE
	(#) G619457113

Comments:

- Crown Diamond was treated by HCL Vapor Deposition
- CVD growth process.
- Indications of post-growth treatment.

www.igi.org

THIS DOCUMENT WAS PRODUCED WITH THE FOLLOWING SECURITY MEASURES: SPECIAL DOCUMENT PAPER, INK SCREENS, WATERMARK