



## LABORATORY GROWN DIAMOND REPORT

## GRADING RESULTS

### ADDITIONAL GRADING INFORMATION

Comments: This Laboratory Grown Diamond was created by Chemical Vapor Deposition (CVD) growth process and may include post-growth treatment.  
Type IIa

LG618453986  
Report verification at [igi.org](https://igi.org)

Medium (Faceted)

58%

15%

43%

35.1°

40.7°

61.1%

Pointed

Figure 1 consists of two circular diagrams. The left diagram shows a circle with an inscribed square and its diagonals. The vertices of the square are labeled 'a' (top), 'b' (right), 'c' (bottom), and 'd' (left). The midpoints of the sides of the square are labeled 'e' (top), 'f' (right), 'g' (bottom), and 'h' (left). The points where the diagonals intersect the sides of the square are labeled 'i' (top-left), 'j' (top-right), 'k' (bottom-right), and 'l' (bottom-left). The points where the diagonals intersect the circle are labeled 'm' (top), 'n' (right), 'o' (bottom), and 'p' (left). The right diagram shows the same circle with a 16-pointed star inscribed. The vertices of the star are labeled 'a' through 'p' in a clockwise direction starting from the top. The points where the star's edges intersect the circle are labeled 'q' through 'r' in a clockwise direction starting from the top.

Red symbols indicate internal characteristics.  
Green symbols indicate external characteristics.

## GRADING SCALES

| IF                  | VVS <sup>1-2</sup>          | VS <sup>1-2</sup>      | SI <sup>1-2</sup> | I <sup>1-3</sup> |
|---------------------|-----------------------------|------------------------|-------------------|------------------|
| Internally Flawless | Very Very Slightly Included | Very Slightly Included | Slightly Included | Included         |

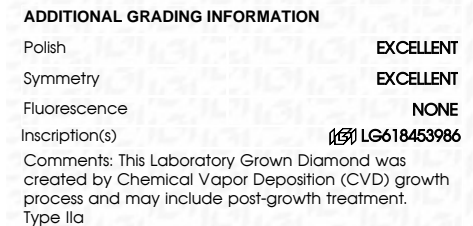
D E F G H I J Faint Very Light Light



FD - 10 20

 THIS DOCUMENT WAS PRODUCED WITH THE FOLLOWING SECURITY MEASURES: SPECIAL DOCUMENT PAPER, INK SCREENS, WATERMARK BACKGROUND DESIGNS, HOLOGRAM AND OTHER SECURITY FEATURES NOT LISTED AND DO EXCEED DOCUMENT SECURITY INDUSTRY GUIDELINES.

| GRADING RESULTS |            |
|-----------------|------------|
| Carat Weight    | 1.43 CARAT |
| Color Grade     | F          |
| Clarity Grade   | VS 2       |
| Cut Grade       | IDEAL      |



|  |                 |
|--|-----------------|
| January 21, 2024   |                 |
| GI Report No LG518453966   |                 |
| ROUND BRILLIANT  |                 |
| 1.22 - 7.25 X 4.42 MM  | 1.43 CARAT      |
| Color Grade  | F               |
| Clarity Grade  | VS 2            |
| Cut Grade  | IDEAL           |
| Depth  | 61.1%           |
| Table  | 68%             |
| Girdle   | Medium Faceted  |
| Culet  | Pointed         |
| Polish   | EXCELLENT       |
| Symmetry   | EXCELLENT       |
| Fluorescence   | NONE            |
| Inscriptions(s)  | g81 LG518453966 |
| Comments:  |                 |
| This Laboratory Grown Diamond was created by Chemical Vapor Deposition (CVD) growth process and may include post-growth treatment. |                 |
| Type IId   |                 |