



ELECTRONIC COPY

LABORATORY GROWN DIAMOND REPORT

January 31, 2024	
IGI Report Number	LG618414748
Description	LABORATORY GROWN DIAMOND
Shape and Cutting Style	ROUND BRILLIANT
Measurements	10.20 - 10.24 X 6.10 MM

GRADING RESULTS

Carat Weight	3.86 CARATS
Color Grade	F
Clarity Grade	VS 2
Cut Grade	IDEAL

ADDITIONAL GRADING INFORMATION

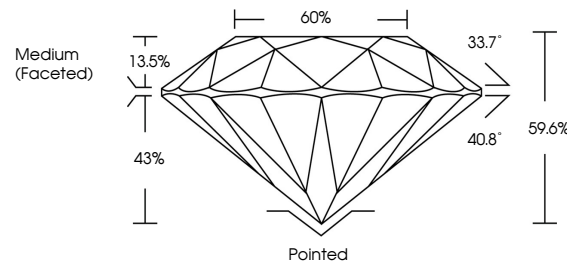
Polish	EXCELLENT
Symmetry	EXCELLENT
Fluorescence	NONE
Inscription(s)	 LG618414748

Comments: This Laboratory Grown Diamond was created by Chemical Vapor Deposition (CVD) growth process and may include post-growth treatment.
Type IIa

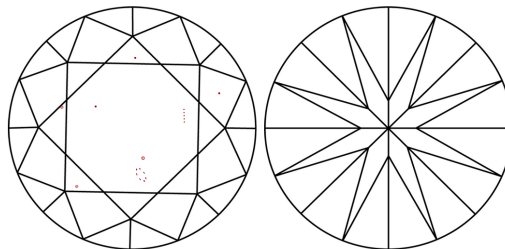
LABORATORY GROWN DIAMOND REPORT

LG618414748
Report verification at igi.org

PROPORTIONS



CLARITY CHARACTERISTICS



KEY TO SYMBOLS

Red symbols indicate internal characteristics.
Green symbols indicate external characteristics.

LABORATORY GROWN
DIAMOND REPORT

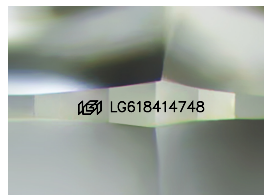
GRADING SCALES

CLARITY

IF	VVS ¹⁻²	VS ¹⁻²	SI ¹⁻²	I ¹⁻³
Internally Flawless	Very Very Slightly Included	Very Slightly Included	Slightly Included	Included

COLOR

D E F G H I J Faint Very Light Light



Sample Image Used



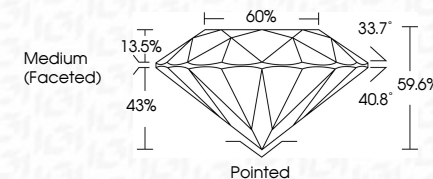
© IGI 2020, International Gemological Institute

FD - 10 20

LABORATORY GROWN DIAMOND REPORT

January 31, 2024	
IGI Report Number	LG618414748
Description	LABORATORY GROWN DIAMOND
Shape and Cutting Style	ROUND BRILLIANT
Measurements	10.20 - 10.24 X 6.10 MM

Carat Weight	3.86 CARATS
Color Grade	F
Clarity Grade	VS 2
Cut Grade	IDEAL



ADDITIONAL GRADING INFORMATION

Polish	EXCELLENT
Symmetry	EXCELLENT
Fluorescence	NONE
Inscription(s)	 LG618414748

Comments: This Laboratory Grown Diamond was created by Chemical Vapor Deposition (CVD) growth process and may include post-growth treatment.
Type IIa



January 31, 2024	Q1 Report No LG518414748	ROUND BRILLIANT	10.20 - 10.24 X 14.10 MM	3.86 CARATS	VS2	Pointed	Comments: This is a Fancy Green Diamond was created by Chemical Vapor Deposition (CVD) growth process and may include post-growth treatment.
	Carat Weight	Color Grade	Clarity Grade	VS2	EXCELLENT	NONE	
	Cut Grade	Depth	Our Grade	IDEAL	EXCELLENT		
	Table	Girdle	Medium Faceted	65%			
	Inscriptions(s)			IGS18414748			
	Polish	Symmetry	Fluorescence				Type IIA