



ELECTRONIC COPY

LABORATORY GROWN DIAMOND REPORT

January 18, 2024	
IGI Report Number	LG617483437
Description	LABORATORY GROWN DIAMOND
Shape and Cutting Style	ROUND BRILLIANT
Measurements	10.24 - 10.27 X 6.08 MM

GRADING RESULTS

Carat Weight	3.85 CARATS
Color Grade	F
Clarity Grade	VS 2
Cut Grade	IDEAL

ADDITIONAL GRADING INFORMATION

Polish	EXCELLENT
Symmetry	EXCELLENT
Fluorescence	NONE
Inscription(s)	LG617483437

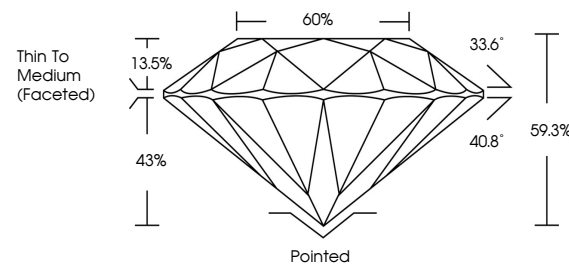
Comments: This Laboratory Grown Diamond was created by Chemical Vapor Deposition (CVD) growth process and may include post-growth treatment.
Type IIa

LABORATORY GROWN DIAMOND REPORT

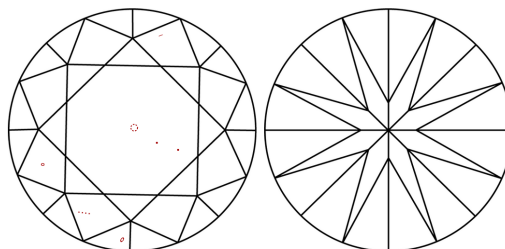
LG617483437

Report verification at igi.org

PROPORTIONS



CLARITY CHARACTERISTICS



KEY TO SYMBOLS

Red symbols indicate internal characteristics.
Green symbols indicate external characteristics.

LABORATORY GROWN
DIAMOND REPORT

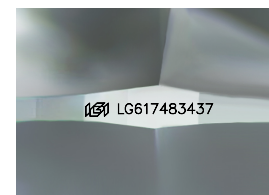
GRADING SCALES

CLARITY

IF	VVS ¹⁻²	VS ¹⁻²	SI ¹⁻²	I ¹⁻³
Internally Flawless	Very Very Slightly Included	Very Slightly Included	Slightly Included	Included

COLOR

D E F G H I J Faint Very Light Light



Sample Image Used



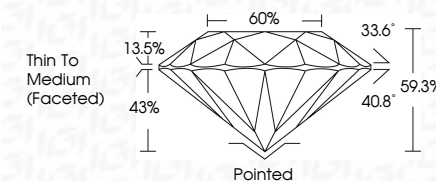
© IGI 2020, International Gemological Institute

FD - 10 20

www.igi.org

LABORATORY GROWN DIAMOND REPORT

January 18, 2024	
IGI Report Number	LG617483437
Description	LABORATORY GROWN DIAMOND
Shape and Cutting Style	ROUND BRILLIANT
Measurements	10.24 - 10.27 X 6.08 MM
GRADING RESULTS	
Carat Weight	3.85 CARATS
Color Grade	F
Clarity Grade	VS 2
Cut Grade	IDEAL



ADDITIONAL GRADING INFORMATION

Polish	EXCELLENT
Symmetry	EXCELLENT
Fluorescence	NONE
Inscription(s)	(15) LG617483437

Comments: This Laboratory Grown Diamond was created by Chemical Vapor Deposition (CVD) growth process and may include post-growth treatment.
Type IIa



January 18, 2024	
GJ Report No L661748347	
RING BELLANT	
10.24 - 10.27 X 4.08 MM	
Color Weight	3.85 CARATS
Color Grade	F
Clarity Grade	VS 2
Cut Grade	IDEAL
Depth	69.3%
Table	60%
Girdle	Thin To Medium (Faceted)
Cuef	Parked
Polish	EXCELLENT
Symmetry	EXCELLENT
Fluorescence	NONE
Inscriptions(s)	#61 LG61748347

Comments:
 Created by Chemex Diamond was treated by Chemical Vapor Deposition (CVD) growth process and may include post-growth treatment.
 Type IIA