



**ELECTRONIC COPY**

**LABORATORY GROWN DIAMOND REPORT**

LG617463453

Report verification at [igi.org](http://igi.org)

**LABORATORY GROWN  
DIAMOND REPORT**

**LABORATORY GROWN DIAMOND REPORT**

**LABORATORY GROWN DIAMOND REPORT**

February 5, 2024  
 IGI Report Number **LG617463453**  
 Description **LABORATORY GROWN  
DIAMOND**  
 Shape and Cutting Style **CUSHION BRILLIANT**  
 Measurements **8.28 X 6.89 X 4.73 MM**

**GRADING RESULTS**

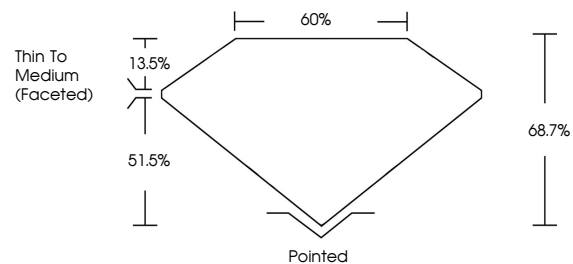
Carat Weight **2.01 CARATS**  
 Color Grade **FANCY INTENSE BLUE**  
 Clarity Grade **SI 1**

**ADDITIONAL GRADING INFORMATION**

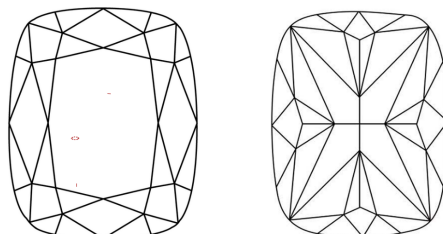
Polish **EXCELLENT**  
 Symmetry **EXCELLENT**  
 Fluorescence **NONE**  
 Inscription(s) **IGI LG617463453**

Comments: This Laboratory Grown Diamond was created by Chemical Vapor Deposition (CVD) growth process.  
 Indications of post-growth treatment.

**PROPORTIONS**



**CLARITY CHARACTERISTICS**



**KEY TO SYMBOLS**

Red symbols indicate internal characteristics.  
 Green symbols indicate external characteristics.

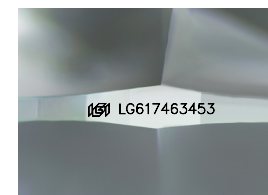
**GRADING SCALES**

**CLARITY**

IF	VVS <sup>1-2</sup>	VS <sup>1-2</sup>	SI <sup>1-2</sup>	I <sup>1-3</sup>
Internally Flawless	Very Very Slightly Included	Very Slightly Included	Slightly Included	Included

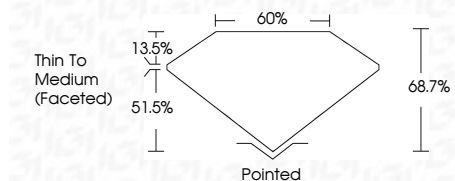
**COLOR**

D	E	F	G	H	I	J	Faint	Very Light	Light
Light Tint	Fancy Light	Fancy	Fancy Intense	Fancy Vivid					



Sample Image Used

February 5, 2024  
 IGI Report Number **LG617463453**  
 Description **LABORATORY GROWN  
DIAMOND**  
 Shape and Cutting Style **CUSHION BRILLIANT**  
 Measurements **8.28 X 6.89 X 4.73 MM**  
**GRADING RESULTS**  
 Carat Weight **2.01 CARATS**  
 Color Grade **FANCY INTENSE BLUE**  
 Clarity Grade **SI 1**



**ADDITIONAL GRADING INFORMATION**

Polish **EXCELLENT**  
 Symmetry **EXCELLENT**  
 Fluorescence **NONE**  
 Inscription(s) **IGI LG617463453**  
 Comments: This Laboratory Grown Diamond was created by Chemical Vapor Deposition (CVD) growth process.  
 Indications of post-growth treatment.



February 5, 2024  
 IGI Report No LG617463453  
**CUSHION BRILLIANT**  
**8.28 X 6.89 X 4.73 MM**  
**2.01 CARATS**  
**FANCY INTENSE BLUE**  
 Carat Weight  
 Color Grade  
 Clarity Grade  
 Depth  
 Table  
 Girdle  
 Thin To Medium (Faceted)  
 Pointed  
 Polish  
 Symmetry  
 Fluorescence  
 Inscription(s)  
**SI 1**  
**68.7%**  
**60%**  
**EXCELLENT**  
**EXCELLENT**  
**NONE**  
**IGI LG617463453**

Comments: This Laboratory Grown Diamond was created by Chemical Vapor Deposition (CVD) growth process.  
 Indications of post-growth treatment.

