

ELECTRONIC COPY

LABORATORY GROWN DIAMOND REPORT

January 13, 2024	
IGI Report Number	LG617447145
Description	LABORATORY GROWN DIAMOND
Shape and Cutting Style	SQUARE CUSHION BRILLIANT
Measurements	6.52 X 6.51 X 4.40 MM

GRADING RESULTS

Carat Weight	1.44 CARAT
Color Grade	F
Clarity Grade	VS 1

ADDITIONAL GRADING INFORMATION

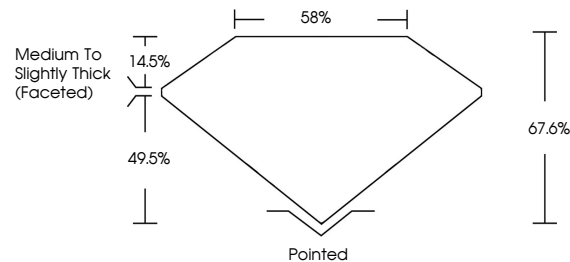
Polish	EXCELLENT
Symmetry	EXCELLENT
Fluorescence	NONE
Inscription(s)	 LG617447145

Comments: This Laboratory Grown Diamond was created by Chemical Vapor Deposition (CVD) growth process and may include post-growth treatment.
Type IIa

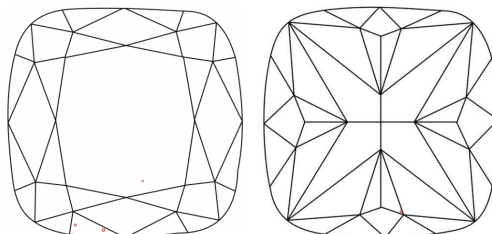
LABORATORY GROWN DIAMOND REPORT

LG617447145
Report verification at igi.org

PROPORTIONS



CLARITY CHARACTERISTICS



KEY TO SYMBOLS

Red symbols indicate internal characteristics.
Green symbols indicate external characteristics.

LABORATORY GROWN
DIAMOND REPORT

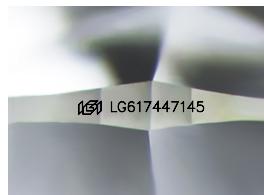
GRADING SCALES

CLARITY

IF	VVS ¹⁻²	VS ¹⁻²	SI ¹⁻²	I ¹⁻³
Internally Flawless	Very Very Slightly Included	Very Slightly Included	Slightly Included	Included

COLOR

D E F G H I J Faint Very Light Light



Sample Image Used

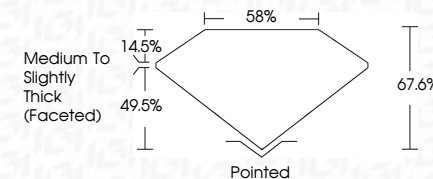


© IGI 2020, International Gemological Institute

FD - 10 20



January 13, 2024	
IGI Report Number	LG617447145
Description	LABORATORY GROWN DIAMOND
Shape and Cutting Style	SQUARE CUSHION BRILLIANT
Measurements	6.52 X 6.51 X 4.40 MM
GRADING RESULTS	
Carat Weight	1.44 CARAT
Color Grade	F
Clarity Grade	VS 1



ADDITIONAL GRADING INFORMATION

Polish	EXCELLENT
Symmetry	EXCELLENT
Fluorescence	NONE
Inscription(s)	 LG617447145

Comments: This Laboratory Grown Diamond was created by Chemical Vapor Deposition (CVD) growth process and may include post-growth treatment.
Type IIa

January 13, 2024	1.44 CARAT
GI Report No LG617447.46	VS 1
Color: Faint Yellow	67.6%
CLARITY: VVS2	58%
SQUARE CUSHION BRILLIANT	Medium to Slightly Thick (Feet)
5.62 X 5.61 X 4.40 MM	Polished
Carat Weight	EXCELLENT
Color Grade	EXCELLENT
Clarity Grade	NONE
Depth	see LG617447.46
Table	
Girdle	
Culet	
Polish	
Symmetry	
Fluorescence	
Measurements (mm)	

Comments:
This Laboratory Grown Diamond was created by Chemical Vapor Deposition (CVD) growth process and may include post-growth treatment.