



# INTERNATIONAL GEMOLOGICAL INSTITUTE

ELECTRONIC COPY

## LABORATORY GROWN DIAMOND REPORT

LG617435358

### LABORATORY GROWN DIAMOND REPORT

#### IGI LABORATORY GROWN DIAMOND IDENTIFICATION REPORT

January 11, 2024  
IGI Report Number LG617435358  
Description LABORATORY GROWN DIAMOND  
Shape and Cutting Style CUSHION BRILLIANT  
Measurements 6.90 X 4.85 X 3.29 MM

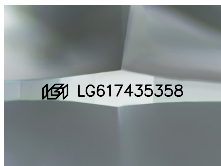
#### GRADING RESULTS

Carat Weight 0.88 CARAT  
Color Grade F  
Clarity Grade VS 2

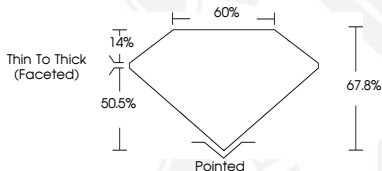
#### ADDITIONAL GRADING INFORMATION

Polish EXCELLENT  
Symmetry EXCELLENT  
Fluorescence NONE  
Inscription(s) IGI LG617435358

Comments: This Laboratory Grown Diamond was created by Chemical Vapor Deposition (CVD) growth process and may include post-growth treatment.  
Type IIa



Sample Image Used



#### IGI LABORATORY GROWN DIAMOND ID REPORT

January 11, 2024  
IGI Report Number LG617435358  
CUSHION BRILLIANT  
6.90 X 4.85 X 3.29 MM  
Carat Weight 0.88 CARAT  
Color Grade F  
Clarity Grade VS 2  
Polish EXCELLENT  
Symmetry EXCELLENT  
Fluorescence NONE  
Inscription(s) IGI LG617435358  
Comments: This Laboratory Grown Diamond was created by Chemical Vapor Deposition (CVD) growth process and may include post-growth treatment. Type IIa

#### IGI LABORATORY GROWN DIAMOND ID REPORT

January 11, 2024  
IGI Report Number LG617435358  
CUSHION BRILLIANT  
6.90 X 4.85 X 3.29 MM  
Carat Weight 0.88 CARAT  
Color Grade F  
Clarity Grade VS 2  
Polish EXCELLENT  
Symmetry EXCELLENT  
Fluorescence NONE  
Inscription(s) IGI LG617435358  
Comments: This Laboratory Grown Diamond was created by Chemical Vapor Deposition (CVD) growth process and may include post-growth treatment. Type IIa



THIS DOCUMENT WAS PRODUCED WITH THE FOLLOWING SECURITY MEASURES: SPECIAL DOCUMENT PAPER, INK SCREENS, WATERMARK, BACKGROUND DESIGN, HOLOGRAM AND OTHER SECURITY FEATURES NOT LISTED AND DO EXCEED DOCUMENT SECURITY INDUSTRY GUIDELINES.

For terms & conditions and to verify this report, please visit [www.igi.org](http://www.igi.org)