



ELECTRONIC COPY

LABORATORY GROWN DIAMOND REPORT

LG616424086

Report verification at igi.org

LABORATORY GROWN DIAMOND REPORT

LABORATORY GROWN DIAMOND REPORT

LABORATORY GROWN DIAMOND REPORT

January 11, 2024
IGI Report Number LG616424086
Description LABORATORY GROWN DIAMOND
Shape and Cutting Style ROUND BRILLIANT
Measurements 7.25 - 7.33 X 4.51 MM

GRADING RESULTS

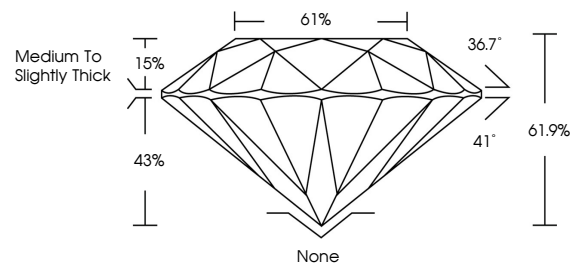
Carat Weight 1.50 CARAT
Color Grade FANCY VIVID BLUE
Clarity Grade SI 2
Cut Grade VERY GOOD

ADDITIONAL GRADING INFORMATION

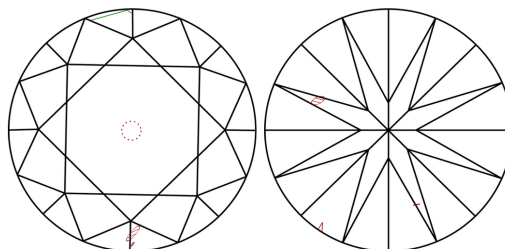
Polish VERY GOOD
Symmetry GOOD
Fluorescence NONE
Inscription(s) IGI LG616424086

Comments: This Laboratory Grown Diamond was created by Chemical Vapor Deposition (CVD) growth process.
Indications of post-growth treatment.

PROPORTIONS



CLARITY CHARACTERISTICS



KEY TO SYMBOLS

Red symbols indicate internal characteristics.
Green symbols indicate external characteristics.

GRADING SCALES

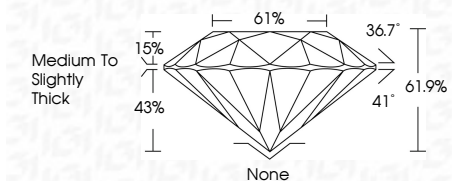
CLARITY

Table mapping clarity grades (IF, VVS, VS, SI, I) to descriptions (Internally Flawless, Very Very Slightly Included, etc.)

COLOR

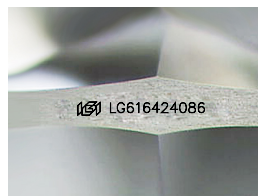
Table mapping color grades (D, E, F, G, H, I, J) to descriptions (Light Tint, Fancy Light, etc.)

January 11, 2024
IGI Report Number LG616424086
Description LABORATORY GROWN DIAMOND
Shape and Cutting Style ROUND BRILLIANT
Measurements 7.25 - 7.33 X 4.51 MM
GRADING RESULTS
Carat Weight 1.50 CARAT
Color Grade FANCY VIVID BLUE
Clarity Grade SI 2
Cut Grade VERY GOOD



ADDITIONAL GRADING INFORMATION

Polish VERY GOOD
Symmetry GOOD
Fluorescence NONE
Inscription(s) IGI LG616424086
Comments: This Laboratory Grown Diamond was created by Chemical Vapor Deposition (CVD) growth process.
Indications of post-growth treatment.



Sample Image Used



IGI

January 11, 2024
IGI Report No LG616424086
ROUND BRILLIANT
1.50 CARAT
FANCY VIVID BLUE
SI 2
VERY GOOD
61.9%
61%
Medium To Slightly Thick
None
VERY GOOD
GOOD
NONE
IGI LG616424086
Comments: This Laboratory Grown Diamond was created by Chemical Vapor Deposition (CVD) growth process.
Indications of post-growth treatment.