



ELECTRONIC COPY

LABORATORY GROWN DIAMOND REPORT

January 2, 2024
 IGI Report Number **LG615373001**
 Description **LABORATORY GROWN
DIAMOND**
 Shape and Cutting Style **OLD EUROPEAN CUT**
 Measurements **7.73 X 7.76 X 4.97 MM**

GRADING RESULTS

Carat Weight **1.90 CARAT**
 Color Grade **E**
 Clarity Grade **VS 1**

ADDITIONAL GRADING INFORMATION

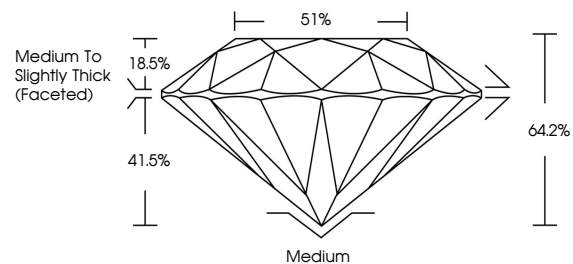
Polish **EXCELLENT**
 Symmetry **EXCELLENT**
 Fluorescence **NONE**
 Inscription(s) **IGI LG615373001**

Comments: This Laboratory Grown Diamond was created by Chemical Vapor Deposition (CVD) growth process and may include post-growth treatment. Type IIa

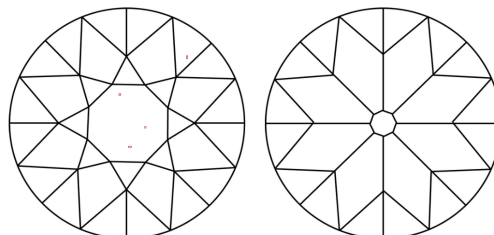
LABORATORY GROWN DIAMOND REPORT

LG615373001
 Report verification at igi.org

PROPORTIONS



CLARITY CHARACTERISTICS



KEY TO SYMBOLS

Red symbols indicate internal characteristics.
 Green symbols indicate external characteristics.

**LABORATORY GROWN
DIAMOND REPORT**

GRADING SCALES

CLARITY

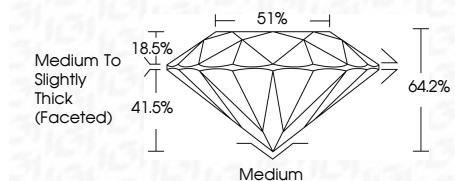
IF	VVS ¹⁻²	VS ¹⁻²	SI ¹⁻²	I ¹⁻³
Internally Flawless	Very Very Slightly Included	Very Slightly Included	Slightly Included	Included

COLOR

D	E	F	G	H	I	J	Faint	Very Light	Light
---	---	---	---	---	---	---	-------	------------	-------

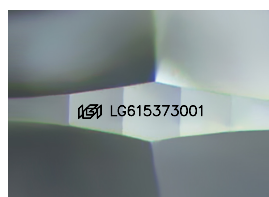
LABORATORY GROWN DIAMOND REPORT

January 2, 2024
 IGI Report Number **LG615373001**
 Description **LABORATORY GROWN
DIAMOND**
 Shape and Cutting Style **OLD EUROPEAN CUT**
 Measurements **7.73 X 7.76 X 4.97 MM**
GRADING RESULTS
 Carat Weight **1.90 CARAT**
 Color Grade **E**
 Clarity Grade **VS 1**



ADDITIONAL GRADING INFORMATION

Polish **EXCELLENT**
 Symmetry **EXCELLENT**
 Fluorescence **NONE**
 Inscription(s) **IGI LG615373001**
 Comments: This Laboratory Grown Diamond was created by Chemical Vapor Deposition (CVD) growth process and may include post-growth treatment. Type IIa



Sample Image Used



IGI

January 2, 2024
 IGI Report No **LG615373001**
OLD EUROPEAN CUT
 7.73 X 7.76 X 4.97 MM
 Carat Weight **1.90 CARAT**
 Color Grade **E**
 Clarity Grade **VS 1**
 Depth **64.2%**
 Table **51%**
 Girdle **Medium to Slightly Thick (Faceted)**
 Culet **Medium**
 Polish **EXCELLENT**
 Symmetry **EXCELLENT**
 Fluorescence **NONE**
 Inscription(s) **IGI LG615373001**

Comments: This Laboratory Grown Diamond was created by Chemical Vapor Deposition (CVD) growth process and may include post-growth treatment. Type IIa