

ELECTRONIC COPY

LABORATORY GROWN DIAMOND REPORT

| | |
|-------------------------|-----------------------------|
| December 31, 2023 | |
| IGI Report Number | LG615362962 |
| Description | LABORATORY GROWN DIAMOND |
| Shape and Cutting Style | SQUARE CUSHION BRILLIANT |
| Measurements | 7.39 X 7.28 X 4.86 MM |

GRADING RESULTS

| | |
|---------------|------------|
| Carat Weight | 1.94 CARAT |
| Color Grade | G |
| Clarity Grade | VS 1 |

ADDITIONAL GRADING INFORMATION

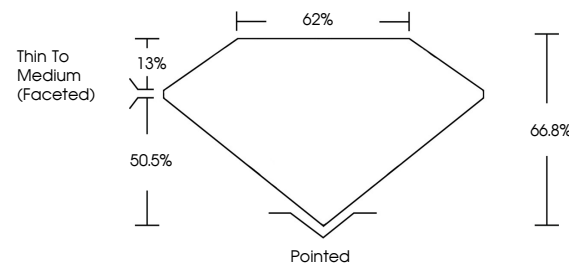
| | |
|----------------|---|
| Polish | EXCELLENT |
| Symmetry | EXCELLENT |
| Fluorescence | NONE |
| Inscription(s) |  LG615362962 |

Comments: This Laboratory Grown Diamond was created by Chemical Vapor Deposition (CVD) growth process and may include post-growth treatment.
Type IIa

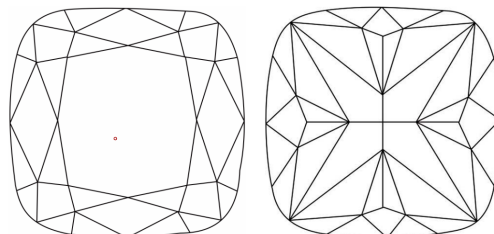
LABORATORY GROWN DIAMOND REPORT

LG615362962
Report verification at lgi.org

PROPORTIONS



CLARITY CHARACTERISTICS



KEY TO SYMBOLS

Red symbols indicate internal characteristics.
Green symbols indicate external characteristics.

LABORATORY GROWN
DIAMOND REPORT

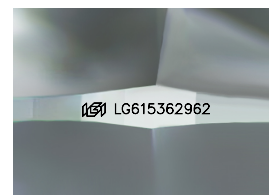
GRADING SCALES

CLARITY

| IF | VVS ¹⁻² | VS ¹⁻² | SI ¹⁻² | I ¹⁻³ |
|---------------------|-----------------------------|------------------------|-------------------|------------------|
| Internally Flawless | Very Very Slightly Included | Very Slightly Included | Slightly Included | Included |

COLOR

D E F G H I J Faint Very Light Light



Sample Image Used



© IGI 2020, International Gemological Institute

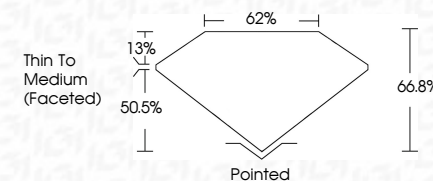
FD - 10 20



THIS DOCUMENT WAS PRODUCED WITH THE FOLLOWING SECURITY MEASURES: SPECIAL DOCUMENT PAPER, INK SCREENS, WATERMARK, BACKGROUND DESIGNS, HOLOGRAM AND OTHER SECURITY FEATURES NOT LISTED AND DO EXCEED DOCUMENT SECURITY INDUSTRY GUIDELINE

LABORATORY GROWN DIAMOND REPORT

| | |
|-------------------------|-----------------------------|
| December 31, 2023 | |
| IGI Report Number | LG615362962 |
| Description | LABORATORY GROWN DIAMOND |
| Shape and Cutting Style | SQUARE CUSHION BRILLIANT |
| Measurements | 7.39 X 7.28 X 4.86 MM |
| GRADING RESULTS | |
| Carat Weight | 1.94 CARAT |
| Color Grade | G |
| Clarity Grade | VS 1 |



ADDITIONAL GRADING INFORMATION

| | |
|----------------|---|
| Polish | EXCELLENT |
| Symmetry | EXCELLENT |
| Fluorescence | NONE |
| Inscription(s) |  LG615362962 |

Comments: This Laboratory Grown Diamond was created by Chemical Vapor Deposition (CVD) growth process and may include post-growth treatment.
Type IIa

December 31, 2023
 IGI Report No LG6153
 SQUARE CISION BRN

| | | |
|-----------------------|--------------------------|-----|
| 3.39 X 7.28 X 4.86 MM | 1.94 CARAT | G |
| Carat Weight | VS 1 | |
| Color Grade | 66.8% | 62% |
| Clarity Grade | Thin To Medium (Faceted) | |
| Depth | Pointed | |
| Table | EXCELLENT | |
| Grade | EXCELLENT | |
| Culet | NONE | |
| Polish | | |
| Symmetry | | |
| Fluorescence | | |

Comments:
This Laboratory Grown Diamond was created by Chemical Vapor Deposition (CVD) growth process and may include post-growth treatment.