

ELECTRONIC COPY

LABORATORY GROWN DIAMOND REPORT

February 7, 2024	
IGI Report Number	LG614307346
Description	LABORATORY GROWN DIAMOND
Shape and Cutting Style	SQUARE CUSHION MODIFIED BRILLIANT
Measurements	7.31 X 7.28 X 5.02 MM

GRADING RESULTS

Carat Weight	2.00 CARATS
Color Grade	D
Clarity Grade	SI 1

ADDITIONAL GRADING INFORMATION

Polish	EXCELLENT
Symmetry	EXCELLENT
Fluorescence	NONE

Inscription(s) LG614307346

Comments: As Grown - No indication of post-growth treatment.

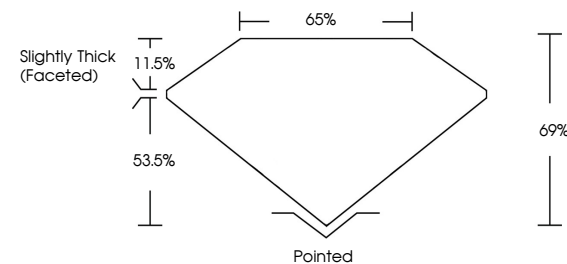
This Laboratory Grown Diamond was created by High Pressure High Temperature (HPHT) growth process.
Type II

LABORATORY GROWN DIAMOND REPORT

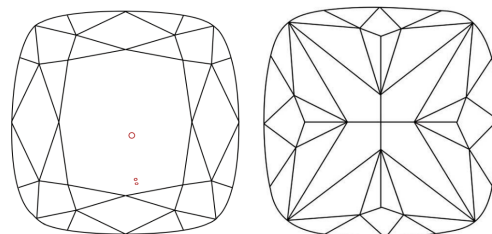
LG614307346

Report verification at igi.org

PROPORTIONS



CLARITY CHARACTERISTICS



KEY TO SYMBOLS

Red symbols indicate internal characteristics.
Green symbols indicate external characteristics.

LABORATORY GROWN
DIAMOND REPORT

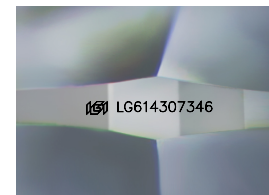
GRADING SCALES

CLARITY

IF	VVS ¹⁻²	VS ¹⁻²	SI ¹⁻²	I ¹⁻³
Internally Flawless	Very Very Slightly Included	Very Slightly Included	Slightly Included	Included

COLOR

D E F G H I J Faint Very Light Light



Sample Image Used



© IGI 2020, International Gemological Institute

FD - 10 20

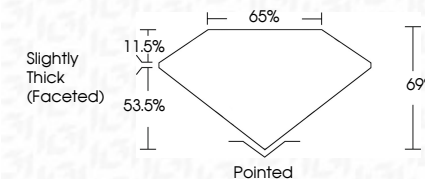


February 7, 2024	
IGI Report Number	LG614307346
Description	LABORATORY GROWN DIAMOND
Shape and Cutting Style	SQUARE CUSHION MODIFIED BRILLIANT

Measurements 7.31 X 7.28 X 5.02 MM

GRADING RESULTS

Carat Weight	2.00 CARATS
Color Grade	D
Clarity Grade	SI 1



ADDITIONAL GRADING INFORMATION

Polish	EXCELLEN
Symmetry	EXCELLEN
Fluorescence	NON
Inscription(s)	163 LG61430734

Comments: As Grown - No indication of post-growth treatment.
This Laboratory Grown Diamond was created by High Pressure High Temperature (HPHT) growth process.
Type II

February 7, 2024	GI Report No. LG614307346	
	SQUARE CUSHION MODIFIED BRILLIANT	
	Carat Weight	2.10 CARATS
	Color Grade	D
	Clarity Grade	S11
	Depth	69%
	Girdle	65%
	Slightly Thick (Faceted)	
	Culet	Pointed
	Polish	EXCELLENT
	Symmetry	EXCELLENT
	Fluorescence	NONE
	Inscriptions(s)	681 LG614307346
Comments:	<p>None - No indication of post-growth treatment.</p> <p>This Laboratory Grown Diamond was created by High Pressure High Temperature (HPHT) growth process.</p>	

Comments:
As Grown - No indication of post-growth treatment
This Laboratory Grown Diamond was created by High Pressure High Temperature (HPHT) growth process.