



ELECTRONIC COPY

LABORATORY GROWN DIAMOND REPORT

December 25, 2023	
IGI Report Number	LG614301031
Description	LABORATORY GROWN DIAMOND
Shape and Cutting Style	PEAR BRILLIANT
Measurements	14.95 X 8.55 X 5.44 MM

GRADING RESULTS

Carat Weight	4.05 CARATS
Color Grade	H
Clarity Grade	VS 2

ADDITIONAL GRADING INFORMATION

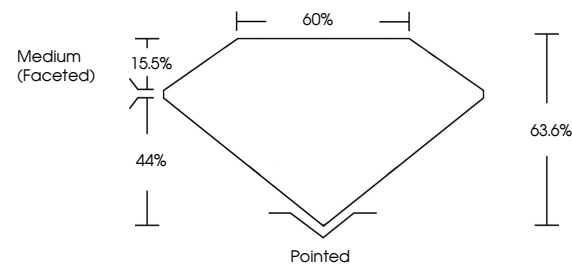
Polish	EXCELLENT
Symmetry	EXCELLENT
Fluorescence	NONE
Inscription(s)	 LG614301031

Comments: This Laboratory Grown Diamond was created by Chemical Vapor Deposition (CVD) growth process and may include post-growth treatment.
Type IIa

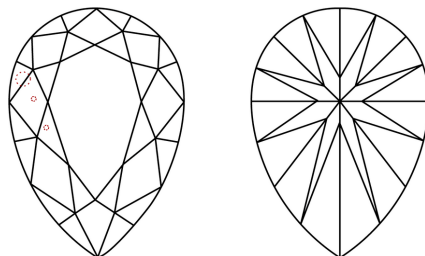
LABORATORY GROWN DIAMOND REPORT

LG614301031
Report verification at [igi.org](https://www.igi.org)

PROPORTIONS



CLARITY CHARACTERISTICS



KEY TO SYMBOLS

Red symbols indicate internal characteristics.
Green symbols indicate external characteristics.

LABORATORY GROWN
DIAMOND REPORT

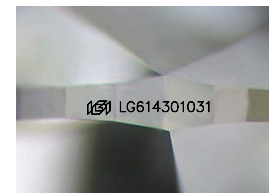
GRADING SCALES

CLARITY

IF	VVS ¹⁻²	VS ¹⁻²	SI ¹⁻²	I ¹⁻³
Internally Flawless	Very Very Slightly Included	Very Slightly Included	Slightly Included	Included

COLOR

D E F G H I J Faint Very Light Light



Sample Image Used



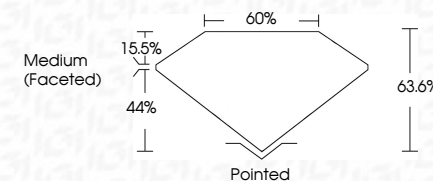
© IGI 2020, International Gemological Institute

FD - 10 20

www.igi.org

LABORATORY GROWN DIAMOND REPORT

December 25, 2023	
IGI Report Number	LG614301031
Description	LABORATORY GROWN DIAMOND
Shape and Cutting Style	PEAR BRILLIANT
Measurements	14.95 X 8.55 X 5.44 MM
GRADING RESULTS	
Carat Weight	4.05 CARATS
Color Grade	H
Clarity Grade	VS 2



ADDITIONAL GRADING INFORMATION

Polish	EXCELLENT
Symmetry	EXCELLENT
Fluorescence	NONE
Inscription(s)	151 LG-614301031

Comments: This Laboratory Grown Diamond was created by Chemical Vapor Deposition (CVD) growth process and may include post-growth treatment.
Type IIa



December 25, 2023
GI Report No LG614301031
PEAR BRILLIANT

PEAR BRILLIANT	14.95 X 5.65 X 5.44 MM	Carat Weight	4.06 CARATS
		Color Grade	H
	Clarity Grade	VS 2	
	Depth	63.6%	
	Table	60%	
	Grade	Medium (Faceted)	
	Claret	Pointed	EXCELLENT
	Polish	Symmetry	EXCELLENT
	Fluorescence		NONE
			see 1/24 report

Comments:
This Laboratory Grown Diamond was created by Chemical Vapor Deposition (CVD) growth process and may include post-growth treatment.