



ELECTRONIC COPY

LABORATORY GROWN DIAMOND REPORT

January 5, 2024	
IGI Report Number	LG613376554
Description	LABORATORY GROWN DIAMOND
Shape and Cutting Style	ROUND BRILLIANT
Measurements	7.89 - 7.92 X 4.87 MM

GRADING RESULTS

Carat Weight	1.87 CARAT
Color Grade	D
Clarity Grade	VVS 1
Cut Grade	IDEAL

ADDITIONAL GRADING INFORMATION

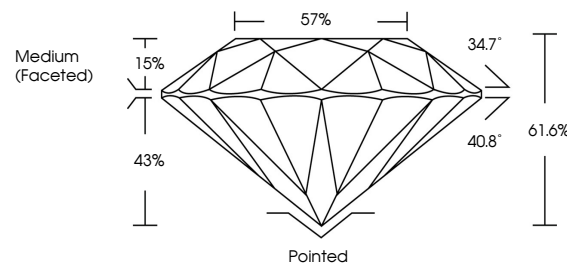
Polish	EXCELLENT
Symmetry	EXCELLENT
Fluorescence	NONE
Inscription(s)	LG613376554

Comments: HEARTS & ARROWS
This Laboratory Grown Diamond was created by
Chemical Vapor Deposition (CVD) growth process.
Type IIa

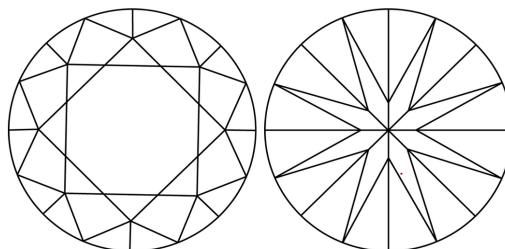
LABORATORY GROWN DIAMOND REPORT

LG613376554
Report verification at igi.org

PROPORTIONS

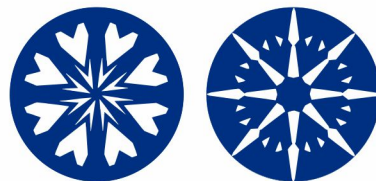


CLARITY CHARACTERISTICS



KEY TO SYMBOLS

Red symbols indicate internal characteristics.
Green symbols indicate external characteristics.



www.igi.org

LABORATORY GROWN
DIAMOND REPORT

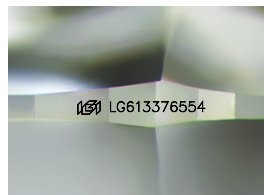
GRADING SCALES

CLARITY

IF	VVS ¹⁻²	VS ¹⁻²	SI ¹⁻²	I ¹⁻³
Internally Flawless	Very Very Slightly Included	Very Slightly Included	Slightly Included	Included

COLOR

D E F G H I J Faint Very Light Light



Sample Image Used

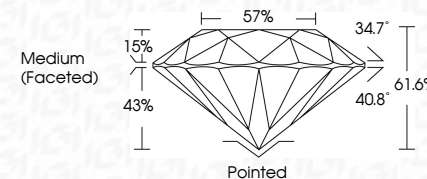


© IGI 2020, International Gemological Institute

FD - 10 20



January 5, 2024	
IGI Report Number	LG613376554
Description	LABORATORY GROWN DIAMOND
Shape and Cutting Style	ROUND BRILLIANT
Measurements	7.89 - 7.92 X 4.87 MM
GRADING RESULTS	
Carat Weight	1.87 CARAT
Color Grade	D
Clarity Grade	VVS 1
Cut Grade	IDEAL



ADDITIONAL GRADING INFORMATION

Polish	EXCELLENT
Symmetry	EXCELLENT
Fluorescence	NONE
Inscription(s)	LG6 LG613376554
<p>Comments: HEARTS & ARROWS This Laboratory Grown Diamond was created by Chemical Vapor Deposition (CVD) growth process. Type Ila</p>	

January 5, 2024
 IGI Report No LG613376554

Report No LG613376554	7.89 - 7.92 X 4.87 MM	1.87 CARAT	
ROUND BRILLIANT	Carat Weight	VVS 1	
	Color Grade	IDEAL	
	Clarity Grade	61.6%	
	Depth	57%	
	Table		
	Girdle	Medium (Faceted)	
	Culet	Pointed	
	Polish	EXCELLENT	
	Symmetry	EXCELLENT	
	Fluorescence	NONE	
	Inscriptions(s)	IGI LG613376554	
	Comments:		
	HEARTS & ARROWS		
	This Laboratory Grown Diamond was created by Chemical Vapor Deposition (CVD) growth process.		
	Type IIA		