



ELECTRONIC COPY

LABORATORY GROWN DIAMOND REPORT

LG613373036

Report verification at igi.org

**LABORATORY GROWN
DIAMOND REPORT**

LABORATORY GROWN DIAMOND REPORT

LABORATORY GROWN DIAMOND REPORT

March 19, 2024
 IGI Report Number **LG613373036**
 Description **LABORATORY GROWN
DIAMOND**
 Shape and Cutting Style **HALF MOON MODIFIED
BRILLIANT**
 Measurements **8.78 X 5.45 X 4.10 MM**

GRADING RESULTS

Carat Weight **1.35 CARAT**
 Color Grade **E**
 Clarity Grade **VVS 2**

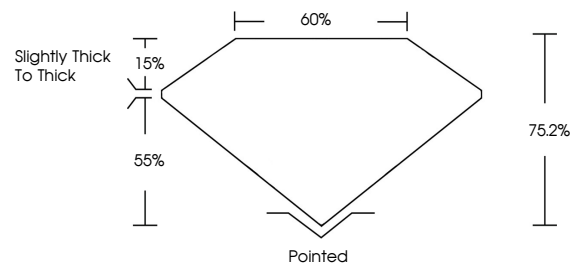
ADDITIONAL GRADING INFORMATION

Polish **EXCELLENT**
 Symmetry **EXCELLENT**
 Fluorescence **NONE**

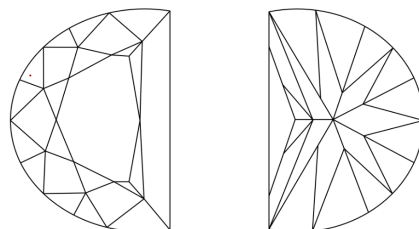
Inscription(s) **IGI LG613373036**

Comments: As Grown - No indication of post-growth treatment.
 This Laboratory Grown Diamond was created by High Pressure High Temperature (HPHT) growth process. Type II

PROPORTIONS



CLARITY CHARACTERISTICS



KEY TO SYMBOLS

Red symbols indicate internal characteristics.
 Green symbols indicate external characteristics.

GRADING SCALES

CLARITY

IF	VVS ¹⁻²	VS ¹⁻²	SI ¹⁻²	I ¹⁻³
Internally Flawless	Very Very Slightly Included	Very Slightly Included	Slightly Included	Included

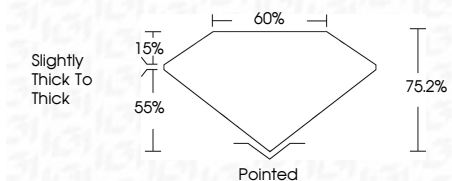
COLOR

D	E	F	G	H	I	J	Faint	Very Light	Light
---	---	---	---	---	---	---	-------	------------	-------

March 19, 2024
 IGI Report Number **LG613373036**
 Description **LABORATORY GROWN
DIAMOND**
 Shape and Cutting Style **HALF MOON MODIFIED
BRILLIANT**
 Measurements **8.78 X 5.45 X 4.10 MM**

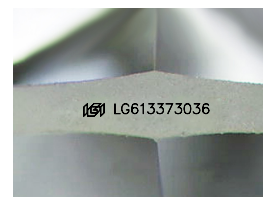
GRADING RESULTS

Carat Weight **1.35 CARAT**
 Color Grade **E**
 Clarity Grade **VVS 2**



ADDITIONAL GRADING INFORMATION

Polish **EXCELLENT**
 Symmetry **EXCELLENT**
 Fluorescence **NONE**
 Inscription(s) **IGI LG613373036**
 Comments: As Grown - No indication of post-growth treatment.
 This Laboratory Grown Diamond was created by High Pressure High Temperature (HPHT) growth process. Type II



Sample Image Used



IGI

March 19, 2024
 IGI Report No LG613373036
HALF MOON MODIFIED BRILLIANT
 8.78 X 5.45 X 4.10 MM
 Carat Weight **1.35 CARAT**
 Color Grade **E**
 Clarity Grade **VVS 2**
 Depth **75.2%**
 Table **60%**
 Girdle **Slightly thick to thick**
 Culet **Pointed**
 Polish **EXCELLENT**
 Symmetry **EXCELLENT**
 Fluorescence **NONE**
 Inscription(s) **IGI LG613373036**

Comments: As Grown - No indication of post-growth treatment.
 This Laboratory Grown Diamond was created by High Pressure High Temperature (HPHT) growth process. Type II