



**ELECTRONIC COPY**

## LABORATORY GROWN DIAMOND REPORT

December 19, 2023	
IGI Report Number	LG613353350
Description	LABORATORY GROWN DIAMOND
Shape and Cutting Style	CUT CORNERED RECTANGULAR MODIFIED BRILLIANT
Measurements	7.08 X 4.99 X 3.40 MM

## GRADING RESULTS

Carat Weight	1.05 CARAT
Color Grade	F
Clarity Grade	VS 1

### ADDITIONAL GRADING INFORMATION

Polish	EXCELLENT
Symmetry	EXCELLENT
Fluorescence	NONE
Inscription(s)	 LG613353350

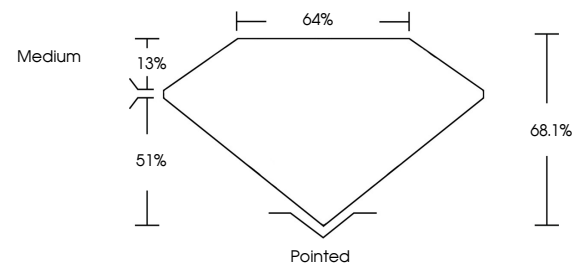
Comments: This Laboratory Grown Diamond was created by Chemical Vapor Deposition (CVD) growth process and may include post-growth treatment.  
Type IIa

## LABORATORY GROWN DIAMOND REPORT

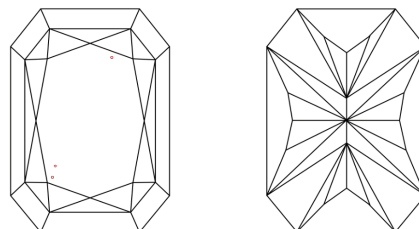
LG613353350

Report verification at [igi.org](http://igi.org)

## PROPORTIONS



## CLARITY CHARACTERISTICS



## KEY TO SYMBOLS

Red symbols indicate internal characteristics.  
Green symbols indicate external characteristics.

LABORATORY GROWN  
DIAMOND REPORT

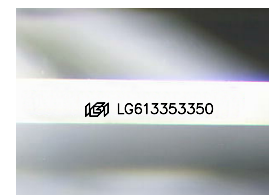
## GRADING SCALES

## CLARITY

IF	VVS <sup>1-2</sup>	VS <sup>1-2</sup>	SI <sup>1-2</sup>	I <sup>1-3</sup>
Internally Flawless	Very Very Slightly Included	Very Slightly Included	Slightly Included	Included

**COLOR**

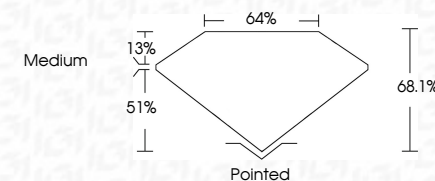
D E F G H I J Faint Very Light Light



Sample Image Used



December 19, 2023	
IGI Report Number	LG613353350
Description	LABORATORY GROWN DIAMOND
Shape and Cutting Style	CUT CORNERED RECTANGULAR MODIFIED BRILLIANT
Measurements	7.08 X 4.99 X 3.40 MM
<b>GRADING RESULTS</b>	
Carat Weight	1.05 CARAT
Color Grade	F
Clarity Grade	VS 1



### ADDITIONAL GRADING INFORMATION

Polish	EXCELLENT
Symmetry	EXCELLENT
Fluorescence	NONE
Inscription(s)	(15) LG613353350

Comments: This Laboratory Grown Diamond was created by Chemical Vapor Deposition (CVD) growth process and may include post-growth treatment.  
Type IIa



© IGI 2020, International Gemological Institute

FD - 10 20

**www.igi.org**

THIS DOCUMENT WAS PRODUCED WITH THE FOLLOWING SECURITY MEASURES: SPECIAL DOCUMENT PAPER, INK SCREENS, WATERMARK, BACKGROUND DESIGNS, HOLOGRAM AND OTHER SECURITY FEATURES NOT LISTED AND DO EXCEED DOCUMENT SECURITY INDUSTRY GUIDELINES

December 19, 2023	GI CORNERED RECT. MODIFIED BRILLIANT
0.08 X 4.79 X 3.40 MM	1.05 CARAT
Color: White	F
Color Grade	Vs1
Clarity Grade	6s1
Depth	64%
Table	
Girdle	Medium
Culet	Pointed
Pash	EXCELLENT
Symmetry	EXCELLENT
Fluorescence	NONE
Inscriptions(s)	681 LG619353950

Comments: Very Fine, Green Diamond was treated by Chemical Vapor Deposition (CVD) growth process and may include post-growth treatment.

Type Ila