



ELECTRONIC COPY

LABORATORY GROWN DIAMOND REPORT

December 14, 2023	
IGI Report Number	LG612317445
Description	LABORATORY GROWN DIAMOND
Shape and Cutting Style	PEAR BRILLIANT
Measurements	14.54 X 8.53 X 5.44 MM

GRADING RESULTS

Carat Weight	3.90 CARATS
Color Grade	F
Clarity Grade	VS 1

ADDITIONAL GRADING INFORMATION

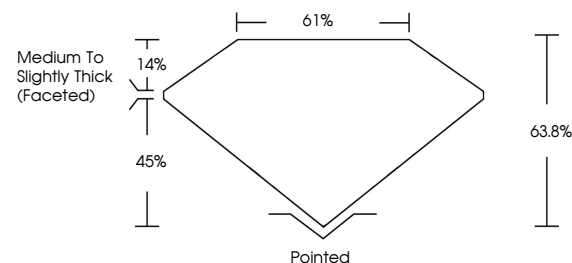
Polish	EXCELLENT
Symmetry	EXCELLENT
Fluorescence	NONE
Inscription(s)	 LG612317445

Comments: This Laboratory Grown Diamond was created by Chemical Vapor Deposition (CVD) growth process and may include post-growth treatment.
Type IIa

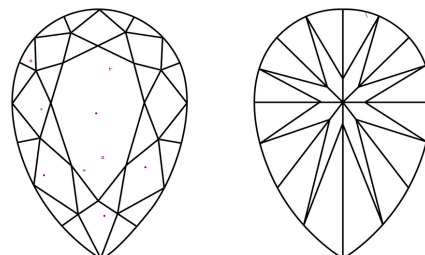
LABORATORY GROWN DIAMOND REPORT

LG612317445
Report verification at igi.org

PROPORTIONS



CLARITY CHARACTERISTICS



KEY TO SYMBOLS

Red symbols indicate internal characteristics.
Green symbols indicate external characteristics.

LABORATORY GROWN
DIAMOND REPORT

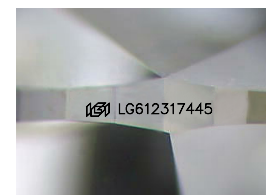
GRADING SCALES

CLARITY

IF	VVS ¹⁻²	VS ¹⁻²	SI ¹⁻²	I ¹⁻³
Internally Flawless	Very Very Slightly Included	Very Slightly Included	Slightly Included	Included

COLOR

D E F G H I J Faint Very Light Light



Sample Image Used



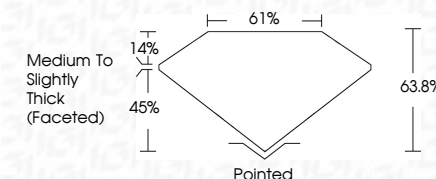
© IGI 2020, International Gemological Institute

FD - 10 20

www.igi.org

LABORATORY GROWN DIAMOND REPORT

December 14, 2023	
IGI Report Number	LG612317445
Description	LABORATORY GROWN DIAMOND
Shape and Cutting Style	PEAR BRILLIANT
Measurements	14.54 X 8.53 X 5.44 MM
GRADING RESULTS	
Carat Weight	3.90 CARATS
Color Grade	F
Clarity Grade	VS 1



ADDITIONAL GRADING INFORMATION

Polish	EXCELLENT
Symmetry	EXCELLENT
Fluorescence	NONE
Inscription(s)	(16) LG612317445

Comments: This Laboratory Grown Diamond was created by Chemical Vapor Deposition (CVD) growth process and may include post-growth treatment.
Type IIa



December 14, 2023
 IGI Report No LG612317445
 PEAR BRILLIANT

PEAR BRILLIANT		14.54 X 5.53 X 5.44 MM		3.90 CARATS	
		Carat Weight		Color Grade	
		Clarity Grade		VS 1	
		Depth		63.9%	
		Table		61%	
		Girdle		Medium To Slightly Thick (faceted)	
		Culet		Pointed	
		Polish		EXCELLENT	
		Symmetry		EXCELLENT	
		Fluorescence		NONE	
		Serial # 6210217145			

Comments:
This Laboratory Grown Diamond was
created by Chemical Vapor Deposition
(CVD) growth process and may include
post-growth treatment.