



ELECTRONIC COPY

LABORATORY GROWN DIAMOND REPORT

LG611368841

Report verification at igi.org

**LABORATORY GROWN
DIAMOND REPORT**

LABORATORY GROWN DIAMOND REPORT

LABORATORY GROWN DIAMOND REPORT

December 13, 2023
IGI Report Number **LG611368841**
Description **LABORATORY GROWN
DIAMOND**
Shape and Cutting Style **ROUND BRILLIANT**
Measurements **7.94 - 7.97 X 4.97 MM**

GRADING RESULTS

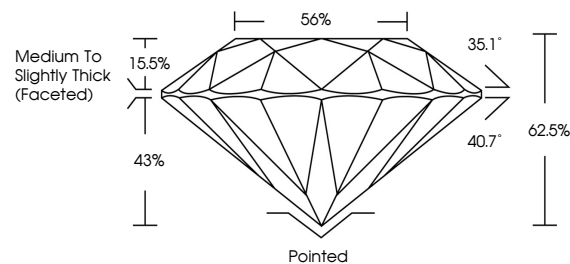
Carat Weight **1.94 CARAT**
Color Grade **D**
Clarity Grade **VVS 2**
Cut Grade **EXCELLENT**

ADDITIONAL GRADING INFORMATION

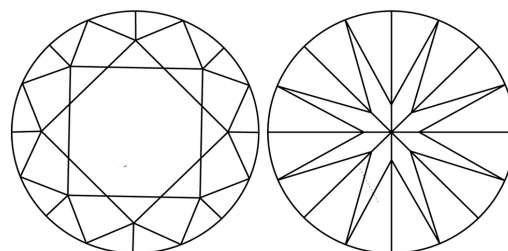
Polish **EXCELLENT**
Symmetry **EXCELLENT**
Fluorescence **NONE**
Inscription(s) **LG611368841**

Comments: HEARTS & ARROWS
This Laboratory Grown Diamond was created by
Chemical Vapor Deposition (CVD) growth process.
Type IIa

PROPORTIONS



CLARITY CHARACTERISTICS



KEY TO SYMBOLS

Red symbols indicate internal characteristics.
Green symbols indicate external characteristics.



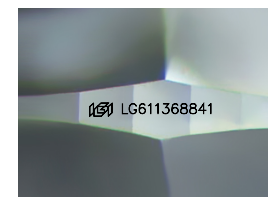
GRADING SCALES

CLARITY

IF	VVS ¹⁻²	VS ¹⁻²	SI ¹⁻²	I ¹⁻³
Internally Flawless	Very Very Slightly Included	Very Slightly Included	Slightly Included	Included

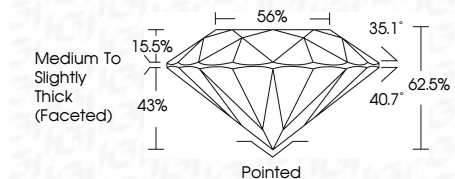
COLOR

D	E	F	G	H	I	J	Faint	Very Light	Light



Sample Image Used

December 13, 2023
IGI Report Number **LG611368841**
Description **LABORATORY GROWN
DIAMOND**
Shape and Cutting Style **ROUND BRILLIANT**
Measurements **7.94 - 7.97 X 4.97 MM**
GRADING RESULTS
Carat Weight **1.94 CARAT**
Color Grade **D**
Clarity Grade **VVS 2**
Cut Grade **EXCELLENT**



ADDITIONAL GRADING INFORMATION

Polish **EXCELLENT**
Symmetry **EXCELLENT**
Fluorescence **NONE**
Inscription(s) **LG611368841**
Comments: HEARTS & ARROWS
This Laboratory Grown Diamond was created by
Chemical Vapor Deposition (CVD) growth process.
Type IIa



IGI

December 13, 2023	IGI Report No LG611368841	ROUND BRILLIANT	1.94 CARAT	D	VVS 2	EXCELLENT	EXCELLENT	EXCELLENT	NONE	LG611368841	
7.94 - 7.97 X 4.97 MM	7.94 - 7.97 X 4.97 MM	ROUND BRILLIANT	1.94 CARAT	D	VVS 2	EXCELLENT	EXCELLENT	EXCELLENT	NONE	LG611368841	
Carat Weight	Color Grade	Clarity Grade	Depth	Table	Girdle	Medium To Slightly Thick (Faceted)	Pointed	Polish	Symmetry	Fluorescence	Inscriptions(s)

Comments: HEARTS & ARROWS
This Laboratory Grown Diamond was created by Chemical Vapor Deposition (CVD) growth process.
Type IIa