



**ELECTRONIC COPY**

## LABORATORY GROWN DIAMOND REPORT

|                         |                             |
|-------------------------|-----------------------------|
| December 12, 2023       |                             |
| IGI Report Number       | LG611368834                 |
| Description             | LABORATORY GROWN<br>DIAMOND |
| Shape and Cutting Style | ROUND BRILLIANT             |
| Measurements            | 6.58 - 6.62 X 3.94 MM       |

## GRADING RESULTS

|               |            |
|---------------|------------|
| Carat Weight  | 1.04 CARAT |
| Color Grade   | E          |
| Clarity Grade | VVS 1      |
| Cut Grade     | IDEAL      |

### ADDITIONAL GRADING INFORMATION

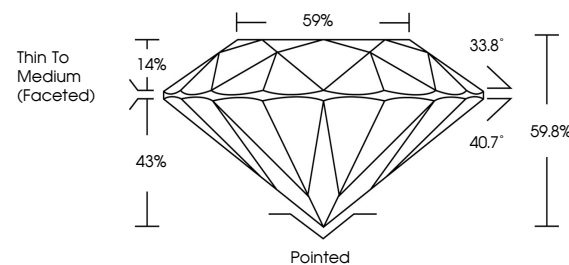
|                |             |
|----------------|-------------|
| Polish         | EXCELLENT   |
| Symmetry       | EXCELLENT   |
| Fluorescence   | NONE        |
| Inscription(s) | LG611368834 |

Comments: HEARTS & ARROWS  
This Laboratory Grown Diamond was created by  
Chemical Vapor Deposition (CVD) growth process.  
Type IIa

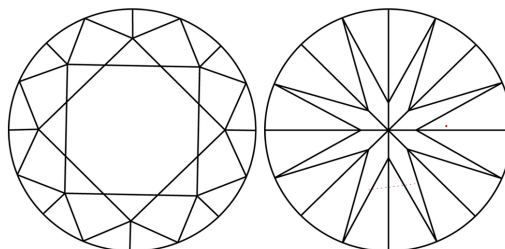
## LABORATORY GROWN DIAMOND REPORT

LG611368834  
Report verification at [igi.org](https://igi.org)

## PROPORTIONS

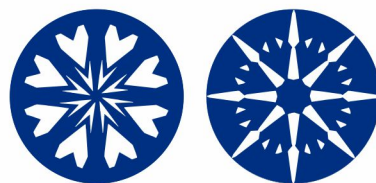


## CLARITY CHARACTERISTICS



### KEY TO SYMBOLS

Red symbols indicate internal characteristics.  
Green symbols indicate external characteristics.



**www.igi.org**

LABORATORY GROWN  
DIAMOND REPORT

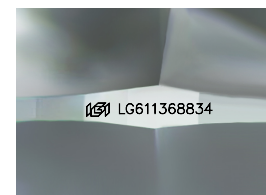
## GRADING SCALES

## CLARITY

| IF                     | VVS <sup>1-2</sup>             | VS <sup>1-2</sup>         | SI <sup>1-2</sup>    | I <sup>1-3</sup> |
|------------------------|--------------------------------|---------------------------|----------------------|------------------|
| Internally<br>Flawless | Very Very<br>Slightly Included | Very<br>Slightly Included | Slightly<br>Included | Included         |

**COLOR**

D E F G H I J Faint Very Light Light



Sample Image Used



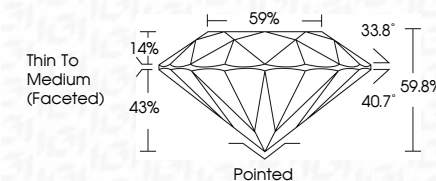
© IGI 2020, International Gemological Institute

FD - 10 20

THIS DOCUMENT WAS PRODUCED WITH THE FOLLOWING SECURITY MEASURES: SPECIAL DOCUMENT PAPER, INK SCREENS, WATERMARK, BACKGROUND DESIGNS, HOLOGRAM AND OTHER SECURITY FEATURES NOT LISTED AND DO EXCEED DOCUMENT SECURITY INDUSTRY GUIDELINE

## LABORATORY GROWN DIAMOND REPORT

|                         |                             |
|-------------------------|-----------------------------|
| December 12, 2023       |                             |
| IGI Report Number       | LG611368834                 |
| Description             | LABORATORY GROWN<br>DIAMOND |
| Shape and Cutting Style | ROUND BRILLIANT             |
| Measurements            | 6.58 - 6.62 X 3.94 MM       |
| <b>GRADING RESULTS</b>  |                             |
| Carat Weight            | 1.04 CARAT                  |
| Color Grade             | E                           |
| Clarity Grade           | VVS 1                       |
| Cut Grade               | IDEAL                       |



### ADDITIONAL GRADING INFORMATION

|  |                           |
|--|---------------------------|
| Polish   | EXCELLENT                 |
| Symmetry   | EXCELLENT                 |
| Fluorescence   | NONE                      |
| Inscription(s)   | <del>LG</del> LG611368834 |
| <p>Comments: HEARTS &amp; ARROWS</p> <p>This Laboratory Grown Diamond was created by Chemical Vapor Deposition (CVD) growth process.</p> <p>Type IIa</p> |                           |



December 12, 2023  
GI Report No LG611368834  
ROUND BRILLIANT

|                       |                         |
|-----------------------|-------------------------|
| 6.58 - 6.62 X 3.94 MM | 1.04 CARAT              |
| Color                 | Color Grade             |
| Clarity               | Clarity Grade           |
| Cut                   | Cut Grade               |
| Depth                 | Depth                   |
| Table                 | Table                   |
| Girdle                | Girdle                  |
| Culet                 | Culet                   |
| Polish                | Polish                  |
| Symmetry              | Symmetry                |
| Fluorescence          | Fluorescence            |
|                       | Thin To Medium (graded) |
|                       | 59.6%                   |
|                       | IDEAL                   |
|                       | VVS 1                   |
|                       | E                       |

**Comments:**  
HEARTS & ARROWS  
This Laboratory Grown Diamond was  
created by Chemical Vapor Deposition  
(CVD) growth process.