



**ELECTRONIC COPY**

## LABORATORY GROWN DIAMOND REPORT

|                         |                             |
|-------------------------|-----------------------------|
| December 6, 2023        |                             |
| IGI Report Number       | LG610346050                 |
| Description             | LABORATORY GROWN<br>DIAMOND |
| Shape and Cutting Style | EMERALD CUT                 |
| Measurements            | 7.46 X 4.49 X 2.96 MM       |

## GRADING RESULTS

|               |                   |
|---------------|-------------------|
| Carat Weight  | 1.02 CARAT        |
| Color Grade   | FANCY VIVID GREEN |
| Clarity Grade | VS 1              |

### ADDITIONAL GRADING INFORMATION

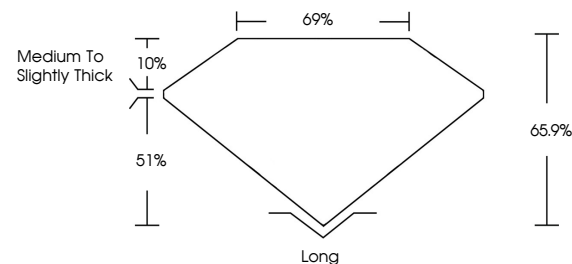
|                |   |
|----------------|---|
| Polish         | EXCELLENT   |
| Symmetry       | EXCELLENT   |
| Fluorescence   | NONE  |
| Inscription(s) |  LG610346050 |

Comments: This Laboratory Grown Diamond was created by Chemical Vapor Deposition (CVD) growth process.  
Indications of post-growth treatment.

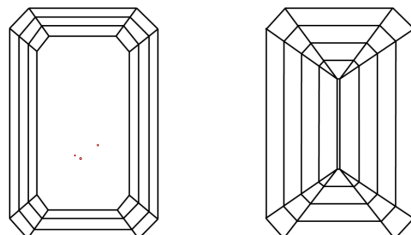
## LABORATORY GROWN DIAMOND REPORT

LG610346050  
Report verification at [igi.org](https://igi.org)

## PROPORTIONS



## CLARITY CHARACTERISTICS



### KEY TO SYMBOLS

Red symbols indicate internal characteristics.  
Green symbols indicate external characteristics.

LABORATORY GROWN  
DIAMOND REPORT

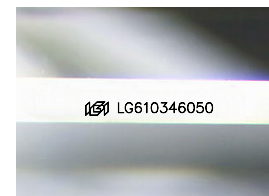
## GRADING SCALES

## CLARITY

| IF                  | VVS <sup>1-2</sup>          | VS <sup>1-2</sup>      | SI <sup>1-2</sup> | I <sup>1-3</sup> |
|---------------------|-----------------------------|------------------------|-------------------|------------------|
| Internally Flawless | Very Very Slightly Included | Very Slightly Included | Slightly Included | Included         |

**COLOR**

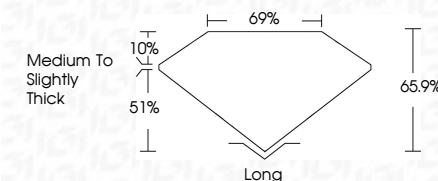
|            |   |   |             |   |       |   |               |            |             |
|------------|---|---|-------------|---|-------|---|---------------|------------|-------------|
| D          | E | F | G           | H | I     | J | Faint         | Very Light | Light       |
| Light Tint |   |   | Fancy Light |   | Fancy |   | Fancy Intense |            | Fancy Vivid |



Sample Image Used



|                         |                             |
|-------------------------|-----------------------------|
| December 6, 2023        |                             |
| IGI Report Number       | LG610346050                 |
| Description             | LABORATORY GROWN<br>DIAMOND |
| Shape and Cutting Style | EMERALD CUT                 |
| Measurements            | 7.46 X 4.49 X 2.96 MM       |
| <b>GRADING RESULTS</b>  |                             |
| Carat Weight            | 1.02 CARAT                  |
| Color Grade             | FANCY VIVID GREEN           |
| Clarity Grade           | VS 1                        |



### ADDITIONAL GRADING INFORMATION

|                |                  |
|----------------|------------------|
| Polish         | EXCELLENT        |
| Symmetry       | EXCELLENT        |
| Fluorescence   | NONE             |
| Inscription(s) | (15) LG610346050 |

Comments: This Laboratory Grown Diamond was created by Chemical Vapor Deposition (CVD) growth process.  
Indications of post-growth treatment.



© IGI 2020, International Gemological Institute

FD - 10 20

**www.igi.org**

THIS DOCUMENT WAS PRODUCED WITH THE FOLLOWING SECURITY MEASURES: SPECIAL DOCUMENT PAPER, INK SCREENS, WATERMARK, BACKGROUND DESIGNS, HOLOGRAM AND OTHER SECURITY FEATURES NOT LISTED AND DO EXCEED DOCUMENT SECURITY INDUSTRY GUIDELINES

|                  |                         |                    |  |
|------------------|-------------------------|--------------------|--|
| December 4, 2023 | GI Report No 1561034050 |                    |  |
| EMERALD CUT      | 4.45 x 4.49 x 2.96 MM   | 1.02 CARAT         |  |
|                  | Color Weight            | FANCY VIVID GREEN  |  |
|                  | Color Grade             | VS 1               |  |
|                  | Clarity Grade           | 65.9%              |  |
|                  | Depth                   | 69%                |  |
|                  | Gable                   | Thick              |  |
|                  | Table                   | Medium to slightly |  |
|                  | Grade                   | Long               |  |
|                  | Polish                  | EXCELLENT          |  |
|                  | Symmetry                | EXCELLENT          |  |
|                  | Fluorescence            | NONE               |  |
|                  | Inscriptions(s)         | 689 LG51034050     |  |

Comments:

1. This is a Very Good Cut Diamond was created by Chemical Vapor Deposition (CVD) growth process.

2. Indications of post-growth treatment.