



**ELECTRONIC COPY**

## LABORATORY GROWN DIAMOND REPORT

December 7, 2023	
IGI Report Number	LG610346029
Description	LABORATORY GROWN DIAMOND
Shape and Cutting Style	EMERALD CUT
Measurements	6.79 X 4.79 X 3.27 MM

## GRADING RESULTS

Carat Weight	1.03 CARAT
Color Grade	FANCY INTENSE GREEN
Clarity Grade	VS 1

### ADDITIONAL GRADING INFORMATION

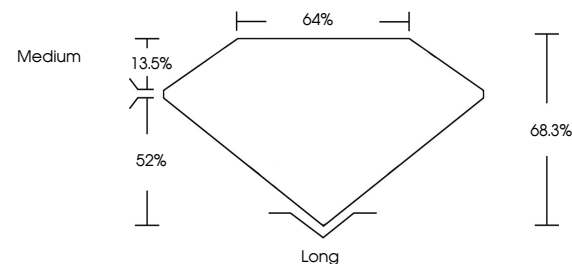
Polish	EXCELLENT
Symmetry	EXCELLENT
Fluorescence	NONE
Inscription(s)	 LG610346029

Comments: This Laboratory Grown Diamond was created by Chemical Vapor Deposition (CVD) growth process.  
Indications of post-growth treatment.

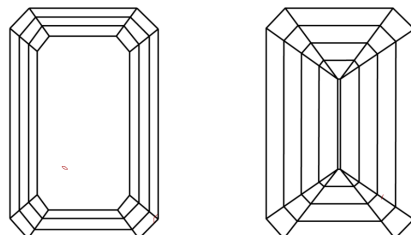
## LABORATORY GROWN DIAMOND REPORT

LG610346029  
Report verification at [igi.org](https://igi.org)

## PROPORTIONS



## CLARITY CHARACTERISTICS



## KEY TO SYMBOLS

Red symbols indicate internal characteristics.  
Green symbols indicate external characteristics.

LABORATORY GROWN  
DIAMOND REPORT

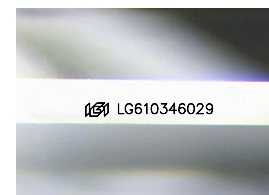
## GRADING SCALES

## CLARITY

IF	VVS <sup>1-2</sup>	VS <sup>1-2</sup>	SI <sup>1-2</sup>	I <sup>1-3</sup>
Internally Flawless	Very Very Slightly Included	Very Slightly Included	Slightly Included	Included

**COLOR**

D	E	F	G	H	I	J	Faint	Very Light	Light
Light Tint			Fancy Light		Fancy		Fancy Intense		Fancy Vivid



Sample Image Used

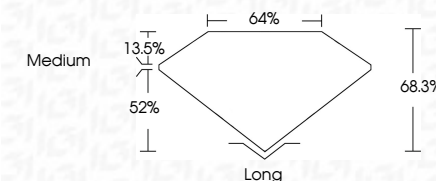


© IGI 2020, International Gemological Institute

FD - 10 20



December 7, 2023	
IGI Report Number	LG610346029
Description	LABORATORY GROWN DIAMOND
Shape and Cutting Style	EMERALD CUT
Measurements	6.79 X 4.79 X 3.27 MM
<b>GRADING RESULTS</b>	
Carat Weight	1.03 CARAT
Color Grade	FANCY INTENSE GREEN
Clarity Grade	VS 1



### ADDITIONAL GRADING INFORMATION

Polish	EXCELLENT
Symmetry	EXCELLENT
Fluorescence	NONE
Inscription(s)	(15) LG610346029

Comments: This Laboratory Grown Diamond was created by Chemical Vapor Deposition (CVD) growth process.  
Indications of post-growth treatment.

December 7, 2023	1.08 CARAT
GI Report No. LG61084629	FANCY INTENSE GREEN
HERALD CUT	VS 1
	68.5%
	64%
	Medium
	Long
	EXCELLENT
	EXCELLENT
	NONE
	681 LG61084629

Comments: This Fancy Green Diamond was created by Chemical Vapor Deposition (CVD) growth process. Indications of post-growth treatment.

**Comments:**  
This Laboratory Grown Diamond was  
created by Chemical Vapor Deposition  
(CVD) growth process.