



**ELECTRONIC COPY**

## LABORATORY GROWN DIAMOND REPORT

|                         |                             |
|-------------------------|-----------------------------|
| January 6, 2024         |                             |
| IGI Report Number       | LG610345352                 |
| Description             | LABORATORY GROWN<br>DIAMOND |
| Shape and Cutting Style | ROUND BRILLIANT             |
| Measurements            | 8.12 - 8.15 X 4.91 MM       |

## GRADING RESULTS

|               |                    |
|---------------|--------------------|
| Carat Weight  | 2.01 CARATS        |
| Color Grade   | FANCY LIGHT YELLOW |
| Clarity Grade | VS 1               |
| Cut Grade     | IDEAL              |

### ADDITIONAL GRADING INFORMATION

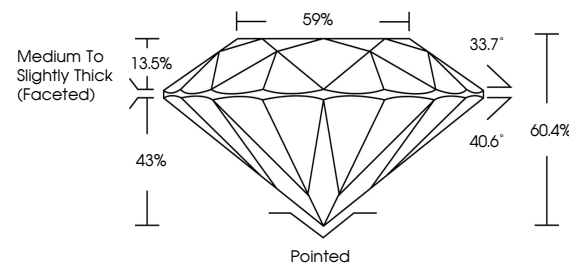
|                |   |
|----------------|---|
| Polish         | EXCELLENT   |
| Symmetry       | EXCELLENT   |
| Fluorescence   | NONE  |
| Inscription(s) |  LG610345352 |

Comments: This Laboratory Grown Diamond was created by Chemical Vapor Deposition (CVD) growth process and may include post-growth treatment.

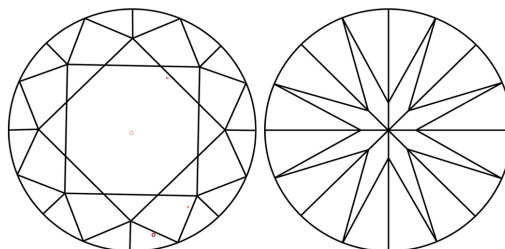
## LABORATORY GROWN DIAMOND REPORT

LG610345352  
Report verification at [lgi.org](https://lgi.org)

## PROPORTIONS



## CLARITY CHARACTERISTICS



## KEY TO SYMBOLS

Red symbols indicate internal characteristics.  
Green symbols indicate external characteristics.

LABORATORY GROWN  
DIAMOND REPORT

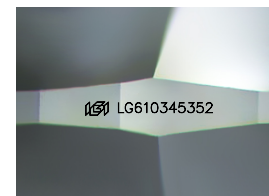
## GRADING SCALES

## CLARITY

| IF                  | VVS <sup>1-2</sup>          | VS <sup>1-2</sup>      | SI <sup>1-2</sup> | I <sup>1-3</sup> |
|---------------------|-----------------------------|------------------------|-------------------|------------------|
| Internally Flawless | Very Very Slightly Included | Very Slightly Included | Slightly Included | Included         |

**COLOR**

|            |   |   |             |   |       |   |               |            |             |
|------------|---|---|-------------|---|-------|---|---------------|------------|-------------|
| D          | E | F | G           | H | I     | J | Faint         | Very Light | Light       |
| Light Tint |   |   | Fancy Light |   | Fancy |   | Fancy Intense |            | Fancy Vivid |



Sample Image Used



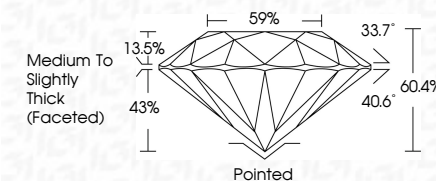
© IGI 2020, International Gemological Institute

FD - 10 20

**www.igi.org**

## LABORATORY GROWN DIAMOND REPORT

|                         |                             |
|-------------------------|-----------------------------|
| January 6, 2024         |                             |
| IGI Report Number       | LG610345352                 |
| Description             | LABORATORY GROWN<br>DIAMOND |
| Shape and Cutting Style | ROUND BRILLIANT             |
| Measurements            | 8.12 - 8.15 X 4.91 MM       |
| <b>GRADING RESULTS</b>  |                             |
| Carat Weight            | 2.01 CARATS                 |
| Color Grade             | FANCY LIGHT YELLOW          |
| Clarity Grade           | VS 1                        |
| Cut Grade               | IDEAL                       |



### ADDITIONAL GRADING INFORMATION

|                |                  |
|----------------|------------------|
| Polish         | EXCELLENT        |
| Symmetry       | EXCELLENT        |
| Fluorescence   | NONE             |
| Inscription(s) | (15) LG610345352 |

Comments: This Laboratory Grown Diamond was created by Chemical Vapor Deposition (CVD) growth process and may include post-growth treatment.

[illegible]