



**INTERNATIONAL
GEMOLOGICAL
INSTITUTE**

ELECTRONIC COPY



July 24, 2025

IGI Report Number LG610335276
MARQUISE BRILLIANT
LABORATORY GROWN DIAMOND
8.74 X 4.18 X 2.46 MM
 Carat Weight **0.52 CARAT**
 Color Grade **FANCY VIVID GREEN**
 Clarity Grade **VVS 2**
 Polish **EXCELLENT**
 Symmetry **EXCELLENT**
 Fluorescence **NONE**
 Inscription(s) **IGI LG610335276**

LABORATORY GROWN DIAMOND REPORT

July 24, 2025
 IGI Report Number **LG610335276**
 Description **LABORATORY GROWN DIAMOND**
 Shape and Cutting Style **MARQUISE BRILLIANT**
 Measurements **8.74 X 4.18 X 2.46 MM**

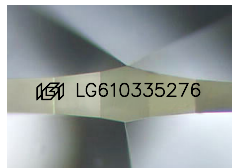
GRADING RESULTS

Carat Weight **0.52 CARAT**
 Color Grade **FANCY VIVID GREEN**
 Clarity Grade **VVS 2**

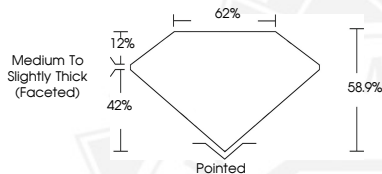
ADDITIONAL GRADING INFORMATION

Polish **EXCELLENT**
 Symmetry **EXCELLENT**
 Fluorescence **NONE**
 Inscription(s) **IGI LG610335276**

Comments: This Laboratory Grown Diamond was created by Chemical Vapor Deposition (CVD) growth process. Indications of post-growth treatment. Pacific Green - In celebration of Brilliant Earth's 20th anniversary, this exclusive pacific green colour is inspired by the Company's California roots.



Sample Image Used



July 24, 2025

IGI Report Number LG610335276
MARQUISE BRILLIANT
LABORATORY GROWN DIAMOND
8.74 X 4.18 X 2.46 MM
 Carat Weight **0.52 CARAT**
 Color Grade **FANCY VIVID GREEN**
 Clarity Grade **VVS 2**
 Polish **EXCELLENT**
 Symmetry **EXCELLENT**
 Fluorescence **NONE**
 Inscription(s) **IGI LG610335276**

Comments: This Laboratory Grown Diamond was created by Chemical Vapor Deposition (CVD) growth process. Indications of post-growth treatment. Pacific Green - In celebration of Brilliant Earth's 20th anniversary, this exclusive pacific green colour is inspired by the Company's California roots.

THIS DOCUMENT WAS PRODUCED WITH THE FOLLOWING SECURITY MEASURES: SPECIAL DOCUMENT PAPER, INK SCREENS, WATERMARK, BACKGROUND DESIGNS, HOLOGRAM AND OTHER SECURITY FEATURES NOT LISTED AND DO EXCEED DOCUMENT SECURITY INDUSTRY GUIDELINES.

For terms & conditions and to verify this report, please visit www.igi.org