



ELECTRONIC COPY

LG610330425

Report verification at igi.org

LABORATORY GROWN DIAMOND REPORT

December 1, 2023
IGI Report Number **LG610330425**

Description **LABORATORY GROWN
DIAMOND**

Shape and Cutting Style **CUSHION MODIFIED BRILLIANT**

Measurements **8.13 X 6.59 X 4.44 MM**

GRADING RESULTS

Carat Weight **1.81 CARAT**

Color Grade **F**

Clarity Grade **VVS 2**

ADDITIONAL GRADING INFORMATION

Polish **EXCELLENT**

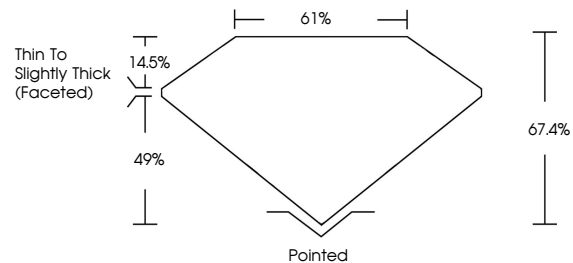
Symmetry **EXCELLENT**

Fluorescence **NONE**

Inscription(s) **LG610330425**

Comments: This Laboratory Grown Diamond was created by Chemical Vapor Deposition (CVD) growth process and may include post-growth treatment. Type IIa

PROPORTIONS



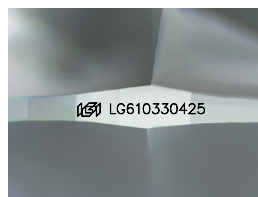
GRADING SCALES

CLARITY

IF	VVS ¹⁻²	VS ¹⁻²	SI ¹⁻²	I ¹⁻³
Internally Flawless	Very Very Slightly Included	Very Slightly Included	Slightly Included	Included

COLOR

D	E	F	G	H	I	J	Faint	Very Light	Light
---	---	---	---	---	---	---	-------	------------	-------



Sample Image Used

December 1, 2023
IGI Report Number **LG610330425**

Description **LABORATORY GROWN
DIAMOND**

Shape and Cutting Style **CUSHION MODIFIED
BRILLIANT**

Measurements **8.13 X 6.59 X 4.44 MM**

GRADING RESULTS

Carat Weight **1.81 CARAT**

Color Grade **F**

Clarity Grade **VVS 2**

ADDITIONAL GRADING INFORMATION

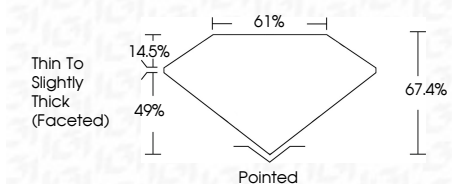
Polish **EXCELLENT**

Symmetry **EXCELLENT**

Fluorescence **NONE**

Inscription(s) **LG610330425**

Comments: This Laboratory Grown Diamond was created by Chemical Vapor Deposition (CVD) growth process and may include post-growth treatment. Type IIa



IGI

December 1, 2023
IGI Report No **LG610330425**
CUSHION MODIFIED BRILLIANT
8.13 X 6.59 X 4.44 MM
Carat Weight **1.81 CARAT**
Color Grade **F**
Clarity Grade **VVS 2**
Depth **67.4%**
Table **61%**
Girdle **Thin To Slightly Thick (Faceted)**
Culet **Pointed**
Polish **EXCELLENT**
Symmetry **EXCELLENT**
Fluorescence **NONE**
Inscription(s) **LG610330425**

Comments: This Laboratory Grown Diamond was created by Chemical Vapor Deposition (CVD) growth process and may include post-growth treatment. Type IIa