

ELECTRONIC COPY

LABORATORY GROWN DIAMOND REPORT

December 2, 2023	
IGI Report Number	LG610318431
Description	LABORATORY GROWN DIAMOND
Shape and Cutting Style	ROUND BRILLIANT
Measurements	9.65 - 9.69 X 6.05 MM

GRADING RESULTS

Carat Weight	3.54 CARATS
Color Grade	G
Clarity Grade	VVS 2
Cut Grade	EXCELLENT

ADDITIONAL GRADING INFORMATION

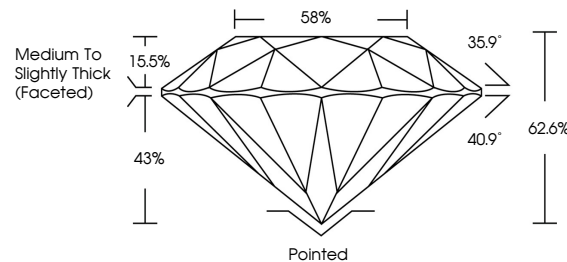
Polish	EXCELLENT
Symmetry	EXCELLENT
Fluorescence	NONE
Inscription(s)	 LG610318431

Comments: This Laboratory Grown Diamond was created by Chemical Vapor Deposition (CVD) growth process and may include post-growth treatment.
Type IIa

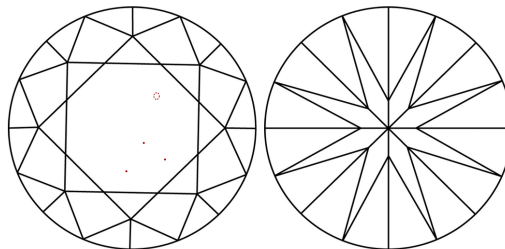
LABORATORY GROWN DIAMOND REPORT

LG610318431
Report verification at igi.org

PROPORTIONS



CLARITY CHARACTERISTICS



KEY TO SYMBOLS

Red symbols indicate internal characteristics.
Green symbols indicate external characteristics.

LABORATORY GROWN
DIAMOND REPORT

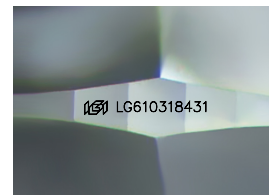
GRADING SCALES

CLARITY

IF	VVS ¹⁻²	VS ¹⁻²	SI ¹⁻²	I ¹⁻³
Internally Flawless	Very Very Slightly Included	Very Slightly Included	Slightly Included	Included

COLOR

D E F G H I J Faint Very Light Light



Sample Image Used

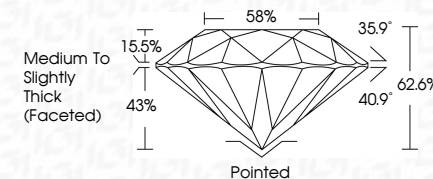


© IGI 2020, International Gemological Institute


FD - 10 20



December 2, 2023	
IGI Report Number	LG610318431
Description	LABORATORY GROWN DIAMOND
Shape and Cutting Style	ROUND BRILLIANT
Measurements	9.65 - 9.69 X 6.05 MM
GRADING RESULTS	
Carat Weight	3.54 CARATS
Color Grade	G
Clarity Grade	VVS 2
Cut Grade	EXCELLENT



ADDITIONAL GRADING INFORMATION

Polish	EXCELLENT
Symmetry	EXCELLENT
Fluorescence	NONE
Inscription(s)	 LG610318431
<p>Comments: This Laboratory Grown Diamond was created by Chemical Vapor Deposition (CVD) growth process and may include post-growth treatment.</p> <p>Type IIa</p>	

December 2, 2023	3.54 CARATS		VVS 2	Medium to slightly Thick Faceted	Polished	NONE	#69 LG210318431	Comments: This Laboratory Grown Diamond was created by Chemical Vapor Deposition (CVD) growth process and may include post-growth treatment.
GI Report No LG210318431	Carat Weight	EXCELLENT	62.6%		EXCELLENT			
ROUND BRILLIANT	Color Grade	G	85%		EXCELLENT			
9.65 - 9.69 X 6.05 MM	Clarity Grade							
	Depth							
	Table							
	Girdle							
	Culet							
	Polish							
	Symmetry							
	Fluorescence							
	Inclusions(s)							
	Type IId							