



ELECTRONIC COPY

LABORATORY GROWN DIAMOND REPORT

December 6, 2023	
IGI Report Number	LG610317166
Description	LABORATORY GROWN DIAMOND
Shape and Cutting Style	ROUND BRILLIANT
Measurements	8.15 - 8.17 X 5.09 MM

GRADING RESULTS

Carat Weight	2.12 CARATS
Color Grade	FANCY VIVID BLUE
Clarity Grade	VVS 2
Cut Grade	EXCELLENT

ADDITIONAL GRADING INFORMATION

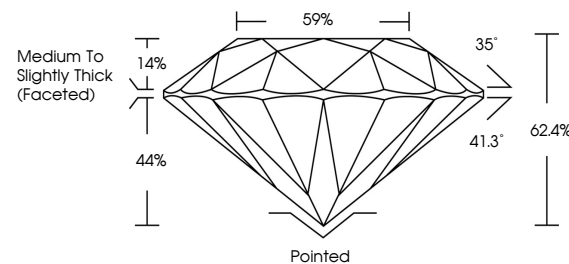
Polish	EXCELLENT
Symmetry	EXCELLENT
Fluorescence	NONE
Inscription(s)	 LG610317166

Comments: This Laboratory Grown Diamond was created by Chemical Vapor Deposition (CVD) growth process.
Indications of post-growth treatment.

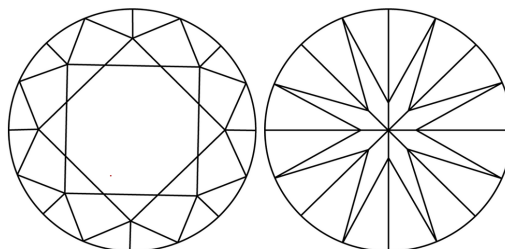
LABORATORY GROWN DIAMOND REPORT

LG610317166
Report verification at igi.org

PROPORTIONS



CLARITY CHARACTERISTICS



KEY TO SYMBOLS

Red symbols indicate internal characteristics.
Green symbols indicate external characteristics.

LABORATORY GROWN
DIAMOND REPORT

GRADING SCALES

CLARITY

IF	VVS ¹⁻²	VS ¹⁻²	SI ¹⁻²	I ¹⁻³
Internally Flawless	Very Very Slightly Included	Very Slightly Included	Slightly Included	Included

COLOR

D	E	F	G	H	I	J	Faint	Very Light	Light
Light Tint			Fancy Light		Fancy		Fancy Intense		Fancy Vivid



Sample Image Used

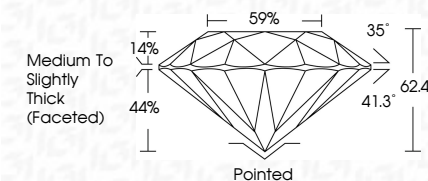


© IGI 2020, International Gemological Institute

FD - 10 20



December 6, 2023	
IGI Report Number	LG610317166
Description	LABORATORY GROWN DIAMOND
Shape and Cutting Style	ROUND BRILLIANT
Measurements	8.15 - 8.17 X 5.09 MM
GRADING RESULTS	
Carat Weight	2.12 CARATS
Color Grade	FANCY VIVID BLUE
Clarity Grade	VVS 2
Cut Grade	EXCELLENT



ADDITIONAL GRADING INFORMATION

Polish	EXCELLENT
Symmetry	EXCELLENT
Fluorescence	NONE
Inscription(s)	 LG610317166
<p>Comments: This Laboratory Grown Diamond was created by Chemical Vapor Deposition (CVD) growth process.</p> <p>Indications of post-growth treatment.</p>	

	Carat Weight	2.12 CARATS
	Color Grade	FANCY VIVID BLUE
	Clarity Grade	VVS 2
	Cut Grade	EXCELLENT
	Depth	62.4%
	Table	89%
	Girdle	Medium to Slightly Thick (Faceted)
	Culet	Poished
	Polish	EXCELLENT
	Symmetry	EXCELLENT
	Turbulence	NONE
	Inscriptions(s)	#61 LG#1037166

Comments:
 This Natural Color Diamond was
 treated by Chemical Vapor Deposition
 (CVD) growth process.
 Indications of post-growth treatment.