



ELECTRONIC COPY

LG610310519

Report verification at igi.org

LABORATORY GROWN DIAMOND REPORT

January 18, 2024
 IGI Report Number **LG610310519**
 Description **LABORATORY GROWN
DIAMOND**
 Shape and Cutting Style **EMERALD CUT**
 Measurements **14.90 X 8.18 X 5.96 MM**

GRADING RESULTS

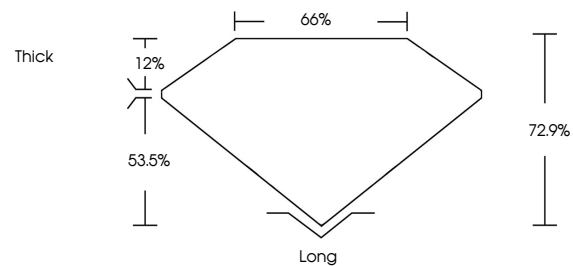
Carat Weight **8.01 CARATS**
 Color Grade **J**
 Clarity Grade **VS 2**

ADDITIONAL GRADING INFORMATION

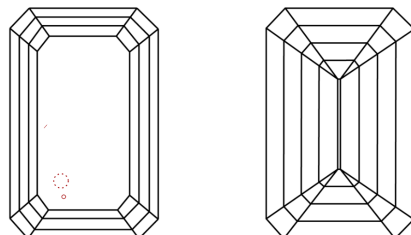
Polish **EXCELLENT**
 Symmetry **EXCELLENT**
 Fluorescence **NONE**
 Inscription(s) **IGI LG610310519**

Comments: This Laboratory Grown Diamond was created by Chemical Vapor Deposition (CVD) growth process and may include post-growth treatment. Type IIa

PROPORTIONS



CLARITY CHARACTERISTICS



KEY TO SYMBOLS

Red symbols indicate internal characteristics.
 Green symbols indicate external characteristics.

GRADING SCALES

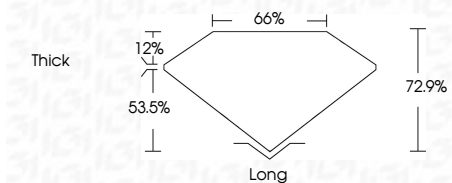
CLARITY

IF	VVS ¹⁻²	VS ¹⁻²	SI ¹⁻²	I ¹⁻³
Internally Flawless	Very Very Slightly Included	Very Slightly Included	Slightly Included	Included

COLOR

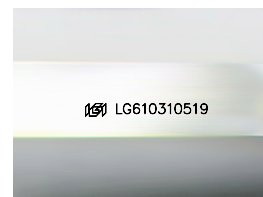
D	E	F	G	H	I	J	Faint	Very Light	Light
---	---	---	---	---	---	---	-------	------------	-------

January 18, 2024
 IGI Report Number **LG610310519**
 Description **LABORATORY GROWN
DIAMOND**
 Shape and Cutting Style **EMERALD CUT**
 Measurements **14.90 X 8.18 X 5.96 MM**
GRADING RESULTS
 Carat Weight **8.01 CARATS**
 Color Grade **J**
 Clarity Grade **VS 2**



ADDITIONAL GRADING INFORMATION

Polish **EXCELLENT**
 Symmetry **EXCELLENT**
 Fluorescence **NONE**
 Inscription(s) **IGI LG610310519**
 Comments: This Laboratory Grown Diamond was created by Chemical Vapor Deposition (CVD) growth process and may include post-growth treatment. Type IIa



Sample Image Used



IGI

January 18, 2024
 IGI Report No. LG610310519
EMERALD CUT
14.90 X 8.18 X 5.96 MM
 Carat Weight **8.01 CARATS**
 Color Grade **J**
 Clarity Grade **VS 2**
 Depth **72.9%**
 Table **66%**
 Girdle **Thick**
 Culet **Long**
 Polish **EXCELLENT**
 Symmetry **EXCELLENT**
 Fluorescence **NONE**
 Inscription(s) **IGI LG610310519**
 Comments: This Laboratory Grown Diamond was created by Chemical Vapor Deposition (CVD) growth process and may include post-growth treatment. Type IIa