



**INTERNATIONAL  
GEMOLOGICAL  
INSTITUTE**

**ELECTRONIC COPY**

**LABORATORY GROWN  
DIAMOND REPORT**

**LG608392663**

**IGI LABORATORY GROWN  
DIAMOND ID REPORT**

December 22, 2023  
IGI Report Number **LG608392663**  
**PEAR MODIFIED BRILLIANT**  
**9.55 X 6.22 X 3.95 MM**  
Carat Weight 1.70 CARAT  
Color Grade FANCY VIVID  
YELLOW  
Clarity Grade VS 2  
Cut Grade VERY GOOD  
Polish EXCELLENT  
Symmetry EXCELLENT  
Fluorescence NONE  
Inscription(s) LG608392663

Comments: As Grown - No indication of post-growth treatment. This Laboratory Grown Diamond was created by High Pressure High Temperature (HPHT) growth process.

**LABORATORY GROWN DIAMOND REPORT**

**IGI LABORATORY GROWN DIAMOND IDENTIFICATION REPORT**

December 22, 2023  
IGI Report Number LG608392663  
Description LABORATORY GROWN DIAMOND  
Shape and Cutting Style PEAR MODIFIED BRILLIANT  
Measurements 9.55 X 6.22 X 3.95 MM

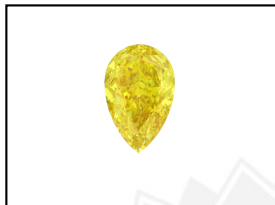
**GRADING RESULTS**

Carat Weight 1.70 CARAT  
Color Grade FANCY VIVID YELLOW  
Clarity Grade VS 2  
Cut Grade VERY GOOD

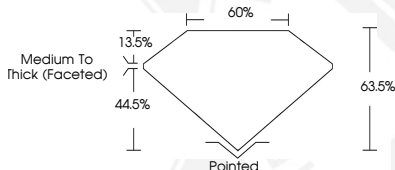
**ADDITIONAL GRADING INFORMATION**

Polish EXCELLENT  
Symmetry EXCELLENT  
Fluorescence NONE  
Inscription(s) LG608392663

Comments: As Grown - No indication of post-growth treatment. This Laboratory Grown Diamond was created by High Pressure High Temperature (HPHT) growth process.



**LASERSCRIBE<sup>SM</sup>**  
Sample Images Used



**IGI LABORATORY GROWN  
DIAMOND ID REPORT**

December 22, 2023  
IGI Report Number **LG608392663**  
**PEAR MODIFIED BRILLIANT**  
**9.55 X 6.22 X 3.95 MM**  
Carat Weight 1.70 CARAT  
Color Grade FANCY VIVID  
YELLOW  
Clarity Grade VS 2  
Cut Grade VERY GOOD  
Polish EXCELLENT  
Symmetry EXCELLENT  
Fluorescence NONE  
Inscription(s) LG608392663

Comments: As Grown - No indication of post-growth treatment. This Laboratory Grown Diamond was created by High Pressure High Temperature (HPHT) growth process.

THIS DOCUMENT WAS PRODUCED WITH THE FOLLOWING SECURITY MEASURES: SPECIAL DOCUMENT PAPER, INK SCREENS, WATERMARK, BACKGROUND DESIGN, HOLOGRAM AND OTHER SECURITY FEATURES NOT LISTED AND DO EXCEED DOCUMENT SECURITY INDUSTRY GUIDELINES.

For terms & conditions and to verify this report, please visit [www.igi.org](http://www.igi.org)