



ELECTRONIC COPY

LABORATORY GROWN DIAMOND REPORT

November 2, 2023	
IGI Report Number	LG607394133
Description	LABORATORY GROWN DIAMOND
Shape and Cutting Style	ROUND BRILLIANT
Measurements	7.32 - 7.34 X 4.41 MM

GRADING RESULTS

Carat Weight	1.44 CARAT
Color Grade	F
Clarity Grade	VS 2
Cut Grade	IDEAL

ADDITIONAL GRADING INFORMATION

Polish	EXCELLENT
Symmetry	EXCELLENT
Fluorescence	NONE
Inscription(s)	 LG607394133

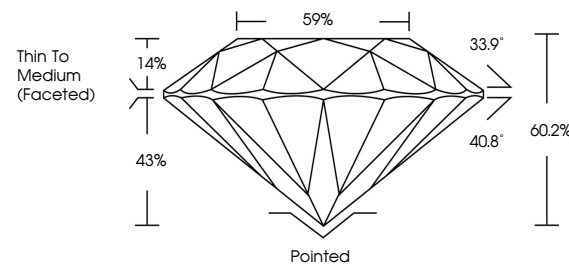
Comments: This Laboratory Grown Diamond was created by Chemical Vapor Deposition (CVD) growth process and may include post-growth treatment.
Type IIa

LABORATORY GROWN DIAMOND REPORT

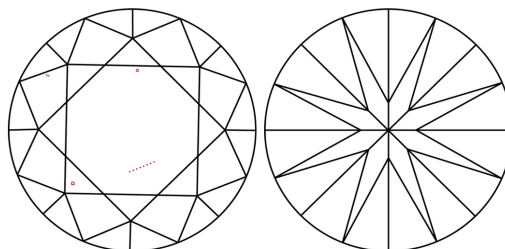
LG607394133

Report verification at igi.org

PROPORTIONS



CLARITY CHARACTERISTICS



KEY TO SYMBOLS

Red symbols indicate internal characteristics.
Green symbols indicate external characteristics.

LABORATORY GROWN
DIAMOND REPORT

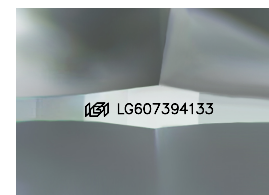
GRADING SCALES

CLARITY

IF	VVS ¹⁻²	VS ¹⁻²	SI ¹⁻²	I ¹⁻³
Internally Flawless	Very Very Slightly Included	Very Slightly Included	Slightly Included	Included

COLOR

D E F G H I J Faint Very Light Light



Sample Image Used



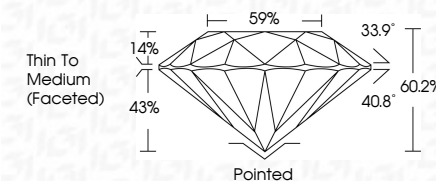
© IGI 2020, International Gemological Institute

FD - 10 20

LABORATORY GROWN DIAMOND REPORT

November 2, 2023	
IGI Report Number	LG607394133
Description	LABORATORY GROWN DIAMOND
Shape and Cutting Style	ROUND BRILLIANT
Measurements	7.32 - 7.34 X 4.41 MM

GRADING RESULTS	
Carat Weight	1.44 CARAT
Color Grade	F
Clarity Grade	VS 2
Cut Grade	IDEAL



ADDITIONAL GRADING INFORMATION

Polish	EXCELLENT
Symmetry	EXCELLENT
Fluorescence	NONE
Inscription(s)	(15) LG607394133

Comments: This Laboratory Grown Diamond was created by Chemical Vapor Deposition (CVD) growth process and may include post-growth treatment.
Type IIa



November 2, 2023	1.44 CARAT	VS 2	Pointed
GI Report No LG507994133	Color Grade	IDEAL	EXCELLENT
ROUND BRILLIANT	Clarity Grade	60/26	EXCELLENT
3.32 - 7.34 X 4.41 MM	Cur. Weight	59%	NONE
Carat Weight	Cur. Grade	Thin To Medium	1691 LG507994133
Color	Depth	(Faceted)	
Table	Girdle	Culet	
Girdle	Polish	Symmetry	
Fluorescence	Fluorescence	Inscriptions(s)	
Comments:			
Treated by Chemical Vapor Deposition			
(CVD) growth process and may include			
post-growth treatment.			
Type IIA			

www.igi.org

THIS DOCUMENT WAS PRODUCED WITH THE FOLLOWING SECURITY MEASURES: SPECIAL DOCUMENT PAPER, INK SCREENS, WATERMARK, BACKGROUND DESIGNS, HOLOGRAM AND OTHER SECURITY FEATURES NOT LISTED AND DO EXCEED DOCUMENT SECURITY INDUSTRY GUIDELINES