

ELECTRONIC COPY

LABORATORY GROWN DIAMOND REPORT

November 6, 2023	
IGI Report Number	LG607333698
Description	LABORATORY GROWN DIAMOND
Shape and Cutting Style	SQUARE CUSHION BRILLIANT
Measurements	7.16 X 7.05 X 4.70 MM

GRADING RESULTS

Carat Weight	1.81 CARAT
Color Grade	G
Clarity Grade	VS 1

ADDITIONAL GRADING INFORMATION

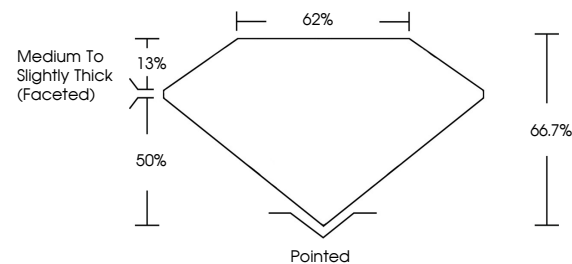
Polish	EXCELLENT
Symmetry	EXCELLENT
Fluorescence	NONE
Inscription(s)	 LG607333698

Comments: This Laboratory Grown Diamond was created by Chemical Vapor Deposition (CVD) growth process and may include post-growth treatment.
Type IIa

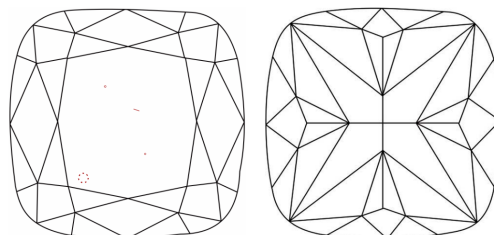
LABORATORY GROWN DIAMOND REPORT

LG607333698
Report verification at igi.org

PROPORTIONS



CLARITY CHARACTERISTICS



KEY TO SYMBOLS

Red symbols indicate internal characteristics.
Green symbols indicate external characteristics.

LABORATORY GROWN
DIAMOND REPORT

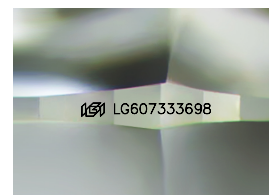
GRADING SCALES

CLARITY

IF	VVS ¹⁻²	VS ¹⁻²	SI ¹⁻²	I ¹⁻³
Internally Flawless	Very Very Slightly Included	Very Slightly Included	Slightly Included	Included

COLOR

D E F G H I J Faint Very Light Light



Sample Image Used

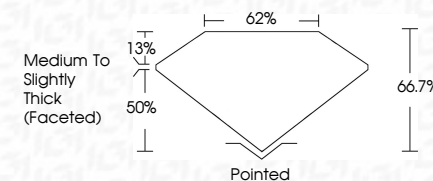


© IGI 2020, International Gemological Institute

FD - 10 20



November 6, 2023	
IGI Report Number	LG607333698
Description	LABORATORY GROWN DIAMOND
Shape and Cutting Style	SQUARE CUSHION BRILLIANT
Measurements	7.16 X 7.05 X 4.70 MM
GRADING RESULTS	
Carat Weight	1.81 CARAT
Color Grade	G
Clarity Grade	VS 1



ADDITIONAL GRADING INFORMATION

Polish	EXCELLENT
Symmetry	EXCELLENT
Fluorescence	NONE
Inscription(s)	 LG607333698

Comments: This Laboratory Grown Diamond was created by Chemical Vapor Deposition (CVD) growth process and may include post-growth treatment.
Type IIa

November 6, 2023	1.81 CARAT	VS 1	Polished	View Report View Certificate View Insurance
GI Report No LG607333698		66.7%	EXCELLENT	
		62%	EXCELLENT	
		Medium to Slightly Thick (Feathered)	NONE	
			ser LG607333698	
SQUARE CUSHION BRILLIANT	7.18 X 7.05 X 4.70 MM			
Color Weight	Color Grade	Clarity Grade	Culet	
		Depth	Polish	
		Table	Symmetry	
		Girdle	Fluorescence	
			Inscriptions	

Comments:
This Laboratory Grown Diamond was created by Chemical Vapor Deposition (CVD) growth process and may include post-growth treatment.