

ELECTRONIC COPY

LABORATORY GROWN DIAMOND REPORT

November 7, 2023	
IGI Report Number	LG607333644
Description	LABORATORY GROWN DIAMOND
Shape and Cutting Style	SQUARE CUSHION BRILLIANT
Measurements	6.95 X 6.86 X 4.66 MM

GRADING RESULTS

Carat Weight	1.70 CARAT
Color Grade	F
Clarity Grade	VS 2

ADDITIONAL GRADING INFORMATION

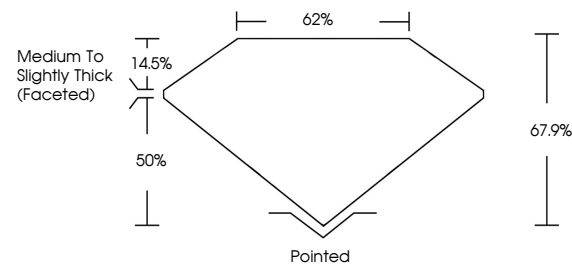
Polish	EXCELLENT
Symmetry	EXCELLENT
Fluorescence	NONE
Inscription(s)	 LG607333644

Comments: This Laboratory Grown Diamond was created by Chemical Vapor Deposition (CVD) growth process and may include post-growth treatment.
Type IIa

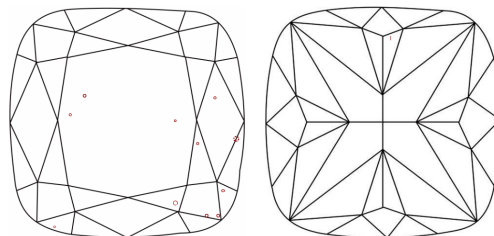
LABORATORY GROWN DIAMOND REPORT

LG607333644
Report verification at igi.org

PROPORTIONS



CLARITY CHARACTERISTICS



KEY TO SYMBOLS

Red symbols indicate internal characteristics.
Green symbols indicate external characteristics.

LABORATORY GROWN
DIAMOND REPORT

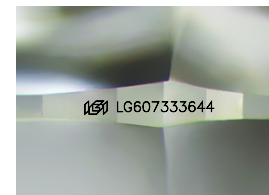
GRADING SCALES

CLARITY

IF	VVS ¹⁻²	VS ¹⁻²	SI ¹⁻²	I ¹⁻³
Internally Flawless	Very Very Slightly Included	Very Slightly Included	Slightly Included	Included

COLOR

D E F G H I J Faint Very Light Light



Sample Image Used

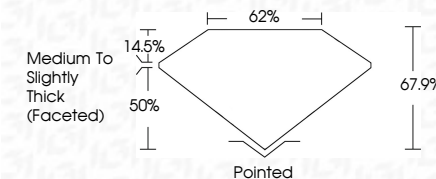


© IGI 2020, International Gemological Institute

FD - 10 20



November 7, 2023	
IGI Report Number	LG607333644
Description	LABORATORY GROWN DIAMOND
Shape and Cutting Style	SQUARE CUSHION BRILLIANT
Measurements	6.95 X 6.86 X 4.66 MM
GRADING RESULTS	
Carat Weight	1.70 CARAT
Color Grade	F
Clarity Grade	VS 2



ADDITIONAL GRADING INFORMATION

Polish	EXCELLENT
Symmetry	EXCELLENT
Fluorescence	NONE
Inscription(s)	 LG607333644

Comments: This Laboratory Grown Diamond was created by Chemical Vapor Deposition (CVD) growth process and may include post-growth treatment.
Type IIa

November 7, 2023
GJ Report No LG60733544
SQIR SQUARE CUSHION BRILLIANT
5.95 X 6.85 X 4.65 MM
Carat Weight
Color Grade
Clarity Grade
Depth
Table
Culet
Polar Symmetry
Fluorescence
Description(s)
VS 2 67.9%
F F
1.70 CARAT
Medium to Slightly Thick (Feetied)
Polished EXCELLENT NONE
ser/LG60733544

Comments:
This Laboratory Grown Diamond was created by Chemical Vapor Deposition (CVD) growth process and may include post-growth treatment.