



**INTERNATIONAL  
GEMOLOGICAL  
INSTITUTE**

**ELECTRONIC COPY**

**LABORATORY GROWN  
DIAMOND REPORT**

**LG607327102**

**IGI LABORATORY GROWN  
DIAMOND ID REPORT**

November 8, 2023  
IGI Report Number **LG607327102**  
**CUT CORNERED RECTANGULAR  
MODIFIED BRILLIANT**  
**5.57 X 3.86 X 2.48 MM**

Carat Weight 0.51 CARAT  
Color Grade FANCY VIVID PINK  
Clarity Grade VS 1  
Polish EXCELLENT  
Symmetry EXCELLENT  
Fluorescence SLIGHT  
Inscription(s) LG607327102

Comments: This Laboratory Grown Diamond was created by Chemical Vapor Deposition (CVD) growth process. Indications of post-growth treatment.

**LABORATORY GROWN DIAMOND REPORT**

**IGI LABORATORY GROWN DIAMOND IDENTIFICATION REPORT**

November 8, 2023  
IGI Report Number LG607327102  
Description LABORATORY GROWN DIAMOND  
Shape and Cutting Style CUT CORNERED RECTANGULAR MODIFIED BRILLIANT  
Measurements 5.57 X 3.86 X 2.48 MM

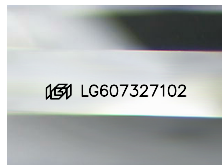
**GRADING RESULTS**

Carat Weight 0.51 CARAT  
Color Grade FANCY VIVID PINK  
Clarity Grade VS 1

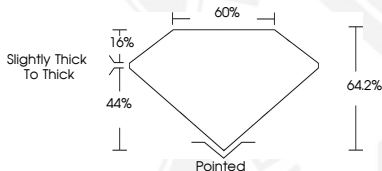
**ADDITIONAL GRADING INFORMATION**

Polish EXCELLENT  
Symmetry EXCELLENT  
Fluorescence SLIGHT  
Inscription(s) LG607327102

Comments: This Laboratory Grown Diamond was created by Chemical Vapor Deposition (CVD) growth process. Indications of post-growth treatment.



Sample Image Used



**IGI LABORATORY GROWN  
DIAMOND ID REPORT**

November 8, 2023  
IGI Report Number **LG607327102**  
**CUT CORNERED RECTANGULAR  
MODIFIED BRILLIANT**  
**5.57 X 3.86 X 2.48 MM**

Carat Weight 0.51 CARAT  
Color Grade FANCY VIVID PINK  
Clarity Grade VS 1  
Polish EXCELLENT  
Symmetry EXCELLENT  
Fluorescence SLIGHT  
Inscription(s) LG607327102

Comments: This Laboratory Grown Diamond was created by Chemical Vapor Deposition (CVD) growth process. Indications of post-growth treatment.



THIS DOCUMENT WAS PRODUCED WITH THE FOLLOWING SECURITY MEASURES: SPECIAL DOCUMENT PAPER, INK SCREENS, WATERMARK, BACKGROUND DESIGN, HOLOGRAM AND OTHER SECURITY FEATURES NOT LISTED AND DO EXCEED DOCUMENT SECURITY INDUSTRY GUIDELINES.

For terms & conditions and to verify this report, please visit [www.igi.org](http://www.igi.org)