



**INTERNATIONAL  
GEMOLOGICAL  
INSTITUTE**

**LABORATORY GROWN DIAMOND REPORT**

December 19, 2024  
 IGI Report Number **LG607316221**  
 Description **LABORATORY GROWN DIAMOND**  
 Shape and Cutting Style **ROUND BRILLIANT**  
 Measurements **5.97 - 6.00 X 3.64 MM**

**GRADING RESULTS**

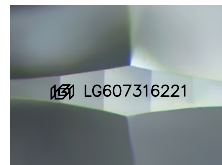
Carat Weight **0.80 CARAT**  
 Color Grade **FANCY INTENSE PINK**  
 Clarity Grade **VS 2**  
 Cut Grade **IDEAL**

**ADDITIONAL GRADING INFORMATION**

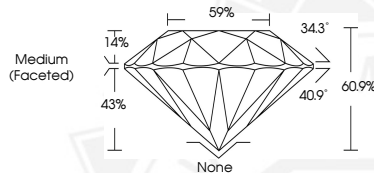
Polish **EXCELLENT**  
 Symmetry **EXCELLENT**  
 Fluorescence **STRONG**  
 Inscription(s) **IGI LG607316221**

Comments: This Laboratory Grown Diamond was created by Chemical Vapor Deposition (CVD) growth process. Indications of post-growth treatment.

**ELECTRONIC COPY**



Sample Image Used



December 19, 2024  
 IGI Report Number **LG607316221**  
 ROUND BRILLIANT  
 LABORATORY GROWN DIAMOND  
 5.97 - 6.00 X 3.64 MM  
 Carat Weight **0.80 CARAT**  
 Color Grade **FANCY INTENSE PINK**  
 Clarity Grade **VS 2**  
 Cut Grade **IDEAL**  
 Polish **EXCELLENT**  
 Symmetry **EXCELLENT**  
 Fluorescence **STRONG**  
 Inscription(s) **IGI LG607316221**

Comments: This Laboratory Grown Diamond was created by Chemical Vapor Deposition (CVD) growth process. Indications of post-growth treatment.



December 19, 2024  
 IGI Report Number **LG607316221**  
 ROUND BRILLIANT  
 LABORATORY GROWN DIAMOND  
 5.97 - 6.00 X 3.64 MM  
 Carat Weight **0.80 CARAT**  
 Color Grade **FANCY INTENSE PINK**  
 Clarity Grade **VS 2**  
 Cut Grade **IDEAL**  
 Polish **EXCELLENT**  
 Symmetry **EXCELLENT**  
 Fluorescence **STRONG**  
 Inscription(s) **IGI LG607316221**

Comments: This Laboratory Grown Diamond was created by Chemical Vapor Deposition (CVD) growth process. Indications of post-growth treatment.

THIS DOCUMENT WAS PRODUCED WITH THE FOLLOWING SECURITY MEASURES: SPECIAL DOCUMENT PAPER, PINK SCREENS, WATERMARK, BACKGROUND DESIGN, HOLOGRAM AND OTHER SECURITY FEATURES NOT LISTED AND DO EXCEED DOCUMENT SECURITY INDUSTRY GUIDELINES.

For terms & conditions and to verify this report, please visit [www.igi.org](http://www.igi.org)