



ELECTRONIC COPY

LG607316106
Report verification at igi.org



November 19, 2024

IGI Report Number **LG607316106**

Description **LABORATORY GROWN DIAMOND**

Shape and Cutting Style **ROUND BRILLIANT**

Measurements **6.98 - 7.02 X 4.29 MM**

GRADING RESULTS

Carat Weight **1.28 CARAT**

Color Grade **FANCY INTENSE PINK**

Clarity Grade **VS 1**

Cut Grade **IDEAL**

November 19, 2024

IGI Report Number **LG607316106**

Description **LABORATORY GROWN DIAMOND**

Shape and Cutting Style **ROUND BRILLIANT**

Measurements **6.98 - 7.02 X 4.29 MM**

GRADING RESULTS

Carat Weight **1.28 CARAT**

Color Grade **FANCY INTENSE PINK**

Clarity Grade **VS 1**

Cut Grade **IDEAL**

ADDITIONAL GRADING INFORMATION

Polish **EXCELLENT**

Symmetry **EXCELLENT**

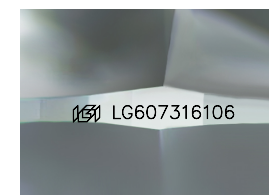
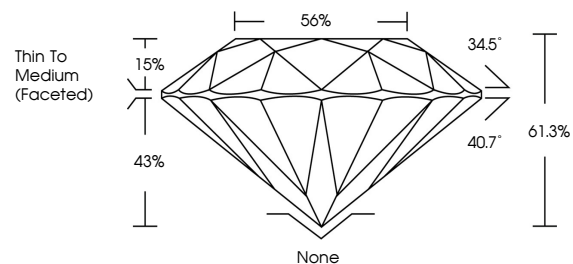
Fluorescence **STRONG**

Inscription(s) **LG607316106**

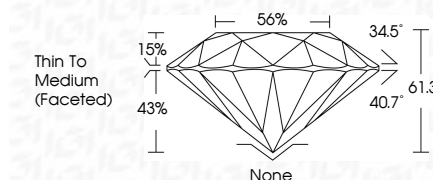
Comments: This Laboratory Grown Diamond was created by Chemical Vapor Deposition (CVD) growth process.

Indications of post-growth treatment.

PROPORTIONS



Sample Image Used



COLOR

D E F G H I J Faint Very Light Light

CLARITY

IF VS¹⁻² VS¹⁻² SI¹⁻² I¹⁻³

Internally Flawless Very Very Slightly Included Very Slightly Included Slightly Included Included

ADDITIONAL GRADING INFORMATION

Polish **EXCELLENT**

Symmetry **EXCELLENT**

Fluorescence **STRONG**

Inscription(s) **LG607316106**

Comments: This Laboratory Grown Diamond was created by Chemical Vapor Deposition (CVD) growth process. Indications of post-growth treatment.



November 19, 2024	IGI Report No LG607316106	ROUND BRILLIANT	6.98 - 7.02 X 4.29 MM	1.28 CARAT	FANCY INTENSE PINK	VS 1	IDEAL	61.3%	56%	Thin To Medium (Faceted)	None	EXCELLENT	EXCELLENT	STRONG	LG607316106
Comments: This Laboratory Grown Diamond was created by Chemical Vapor Deposition (CVD) growth process. Indications of post-growth treatment.															